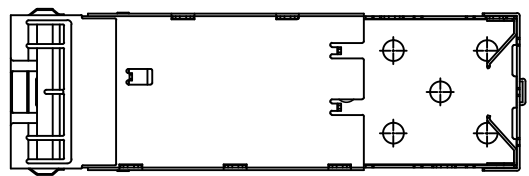
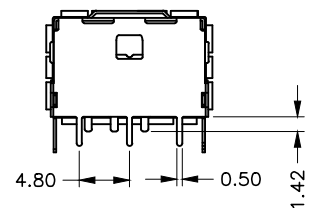
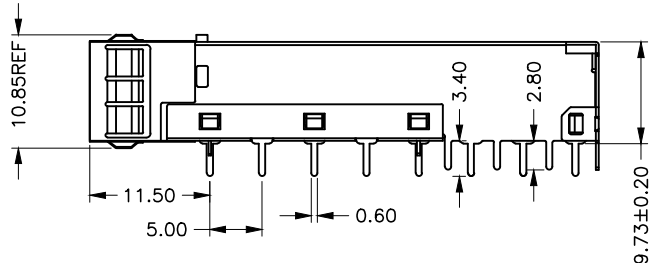
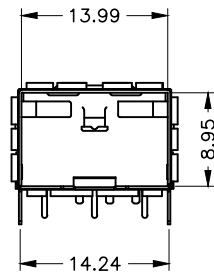
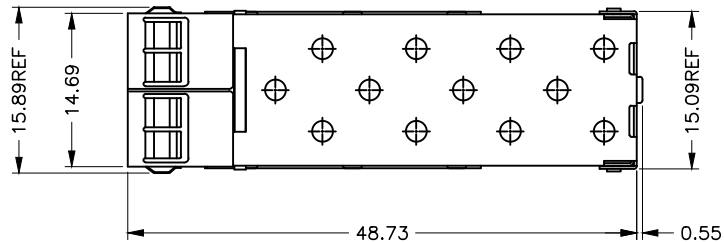


RoHS

THIS IS A RoHS  
COMPLIANT  
COMPONENT/  
PRODUCT.


Reference Drawing



NOTE:

- 1.MATERIAL
  - 1.1SFP CAGE:COPPER-NICKEL ALLOY
  - 1.2EMI SPRING:COPPER ALLOY
- 2.FINISH
  - 2.1SFP CAGE:SEE TABLE
  - 2.2EMI SPRING:NI PLATED OVER ALL
- 3.TEMPERATURE:
  - 3.1OPERATION: -40°C~+85°C
  - 3.2STORAGE: -55°C~+105°C
- 4.BURR:0.05mm MAX
- 5.PART NUMBER : K331X-133-XX

0-NO PLATING      L01-CAGE  
N-NI

△ X0	0068000	NEW DESIGN	Joy	111823
MARK	ECN-NO.	REVISION RECORD	DRAWN	DATE
 Contact Technology Co., Ltd. Material/Plated/Notes		UNLESS OTHERWISE SPECIFIED TOLERANCE	SCALE	CHECKED
		Dimension Range   Tolerance	1/1	APPROVED
		.X ±0.25	UNIT	SHEET 1/1
		.XX ±0.13	mm	
.XXX ±0.10	SIZE	A3		
ANGLE	±2°			
SEE NOTE		SFP+ 1X1 CAGE		
Tooling No.	PART NO.	SEE NOTE		REV.
	DOC. NO.	KK330A133		0