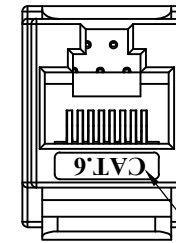
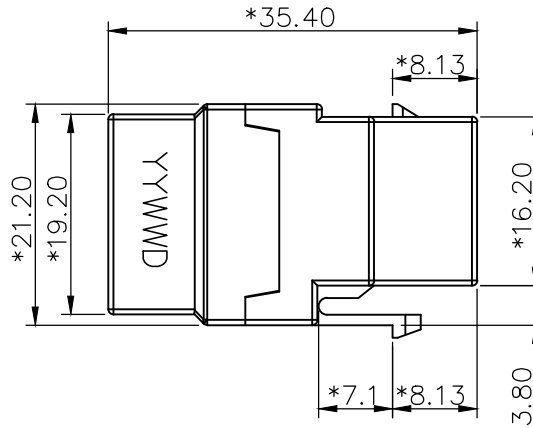
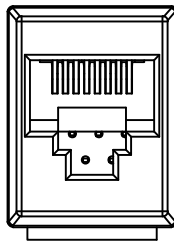
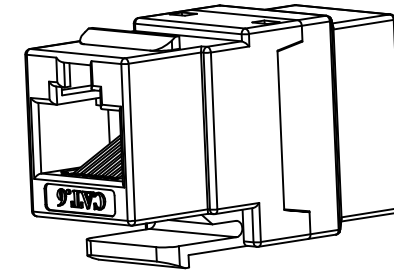
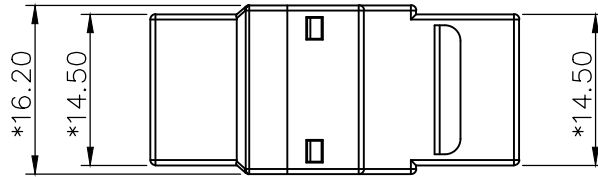
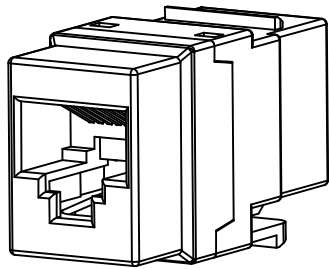
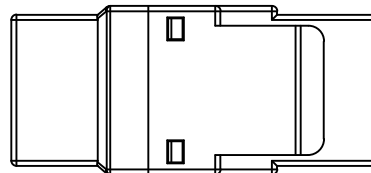


ROHS

THIS IS A RoHS COMPLIANT COMPONENT/PRODUCT.



LOGO ABOVE THE SURFACE 0.20mm



NOTES:

ELECTRICAL:

1. VOLTAGE RATING : 125 VAC
2. CURRENT RATING : 1.5 AMP.
3. CONTACT RESISTANCE : 100 MILLIOHMS MAX.
4. INSULATION RESISTANCE : 1000 MEGOHMS MIN. @ 500 VDC.
5. DIELECTRIC STRENGTH : 750 VAC 60Hz, 1MIN.

MECHANICAL:


1. HOUSING MATERIAL : PC UL94V-0
2. INSERT MATERIAL : GLASS FILLED POLYESTER UL94V-0 BK.
3. PCB MATERIAL : FR-4 THICKNESS 1.6mm
4. CONTACT MATERIAL : PHOSPHOR BRONZE STAMP PIN t=0.35mm

ENVIRONMENTAL:

1. STORAGE: -40°C TO +85°C.
 2. OPERATION: -40°C TO +85°C.
- MATES WITH MODULAR PLUG CONFORMING TO TIA-1096-A.

PART NUMBER: N446X-004-0X

- | | |
|-------------------------|--|
| <p>2-6u"
5-50u"</p> | <p>1- WHITE W/O DATE CODE
2- BLACK W/O DATE CODE
3- WHITE W/DATE CODE
4- BLUE(Pantone 3005u) W/O DATE CODE</p> |
|-------------------------|--|

△ X0	000000	NEW DESIGN		HENRY	052716'
MARK	ECN-NO.	REVISION RECORD		DRAWN	DATE
 Contact Technology Co., Ltd.		UNLESS OTHERWISE SPECIFIED TOLERANCE		SCALE	CHECKED
		Dimension Range	Tolerance	1/1	APPROVED
		X.X	±0.20	UNIT	mm
		X.XX	±0.15	SIZE	A3
Material/Plated/Notes		ANGLE		±5°	SHEET 1/1
NOTE		CAT.6 COUPLER			
Tooling No.		PART NO.		REV.	
		N446X-004-0X		0	
		DOC. NO.		NN446A004	