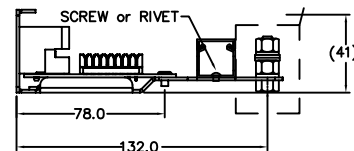
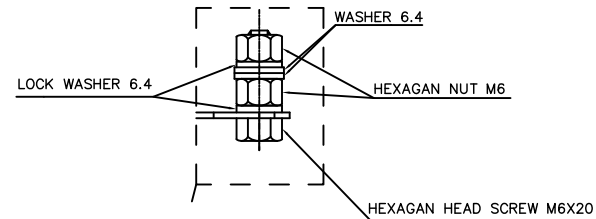
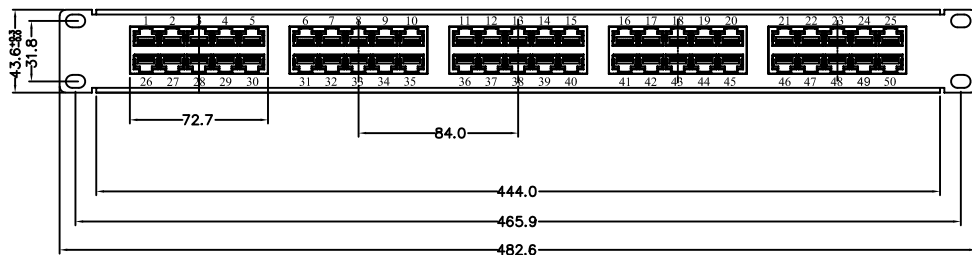
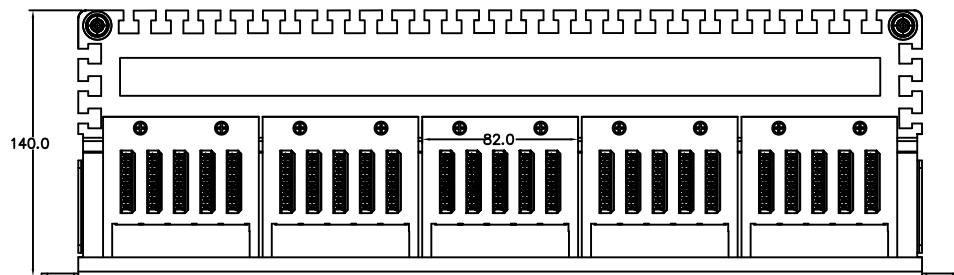
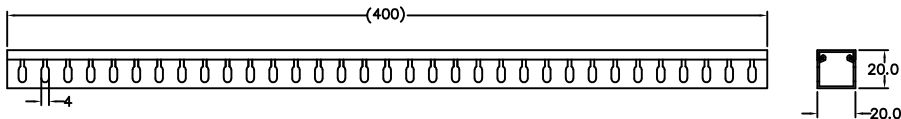


ROHS

THIS IS A ROHS COMPLIANT COMPONENT/PRODUCT.



NOTES:

ELECTRICAL:

- 1.VOLTAGE RATING: 125 VAC RMS
- 2.CURRENT RATING: 1.5 AMP
- 3.CONTACT RESISTANCE: 100 MILLIOHMS MAX
- 4.INSULATION RESISTANCE: 1000 MEGOHMS MIN @ 500 VDC
- 5.DIELECTRIC STRENGTH: 750 VAC RMS 60Hz, 1MIN

MATES WITH MODULAR PLUG CONFORMING TO FCC PART68.

MECHANICAL:

- 1.HOUSING MATERIAL: PBT+30%GF UL 94V-0; COLOR: BLACK
- 2.PANEL FRAME: CARBON STEEL, POWDER COATING IN BLACK OR GREY(RAL7035 COLOR
- 3.IDC MATERIAL: PC UL 94V-0, CONTACT: PHOSPHOR BRONZE WITH SILVER PATING

PART NUMBER: N422X-070-XX

1-3u" 2-6u"
3-15u" 4-30u"
5-50u"

01-GREY(RAL7035)

| | | | | |
|----------------------------------|--------------------------------------|--------------------------------|-------|-----------|
| △ | 000000 | NEW DESIGN | JES | 112322' |
| MARK | ECN-NO. | REVISION RECORD | DRAWN | DATE |
| Contact Technology Co., Ltd. | UNLESS OTHERWISE SPECIFIED TOLERANCE | | SCALE | CHECKED |
| | Dimension Range | Tolerance | 1/1 | |
| | X.X | ±0.20 | UNIT | APPROVED |
| | X.XX | ±0.15 | mm | |
| | X.XXX | ±0.10 | SIZE | A3 |
| | ANGLE | ±5° | | SHEET 1/1 |
| Material/Plated/Notes | | NAME | | |
| SEE NOTE | | 50 Ports,19" patch panel Cat.3 | | |
| Tooling No. | PART NO. | N422X-070-XX | | REV. |
| | DOC. NO. | N422A070 | | 0 |