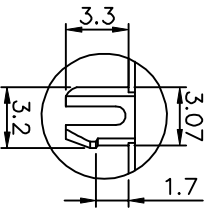


PC BOARD LAYOUT T=1.60MM
COMPONENT SIDE SHOWN



DETAIL "A"
SCALE 2:1

NOTES:

ELECTRICAL:

1. VOLTAGE RATING : 125 VAC RMS.
2. CURRENT RATING : 1.5 AMP.
3. CONTACT RESISTANCE : 50 MILLIOHMS MAX.
4. INSULATION RESISTANCE: 1000 MEGOHMS MIN @ 500 VDC.
5. DIELECTRIC STRENGTH : 1000 VAC RMS 60HZ, 1MIN.

MECHANICAL:

1. HOUSING & INSERT MATERIAL : GLASS FILLED POLYESTER UL94V-0.
2. CONTACT MATERIAL : PHOSPHOR BRONZE, Ø0.46mm.
3. PLATING : GOLD PLATING OVER NICKEL.
4. OPERATING LIFE : 750 CYCLES MIN.
5. PCB RETENTION PRE-SOLDER : 1 LB MIN.
6. PCB RETENTION POST-SOLDER: 10 LBS MIN.

ENVIRONMENTAL:

1. STORAGE : -40°C TO +85°C.
 2. OPERATION: 0°C TO +70°C.
- MATES WITH MODULAR PLUG CONFORMING TO FCC PART 68, SUBPART F.
PART NUMBER: N39AX-164-0X

- 1-3u" 2-6u"
- 3-15u" 4-30u"
- 5-50u" 7-GOLD FLASH

- 1-6P2C GY.
- 2-6P4C GY.
- 3-6P2C BK.
- 4-6P4C BK.
- Δ5-6P2C GY(Panton cool gray 3U).

△ X1	ADD NEW P/N	HENRY	0714171
△ X5	UPGRADE DRAWING	DORIS	0105171
△ X0	NEW DESIGN	ROCK	110912
MARK	ECN-NO.	REVISION RECORD	DRAWN DATE
		MAX. OVERSTRESS Dimension Range Tolerance XXX ±0.20 UNIT XXX ±0.15 XXX ±0.10 SIZE A3	CHECKED APPROVED
Contact Technology Co., Ltd. Material/Parted/Notes SEE NOTE		NAME	SHEET 1/1
R/J11 2X1 STACKED PCB JACK, UTP		PART NO.	REV.
DDC. NO. NN390A164		DOC. NO.	C