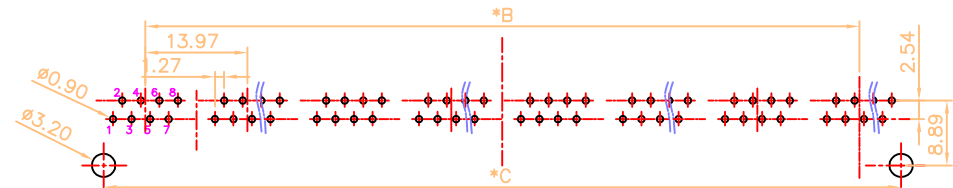
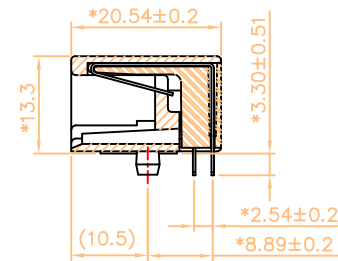
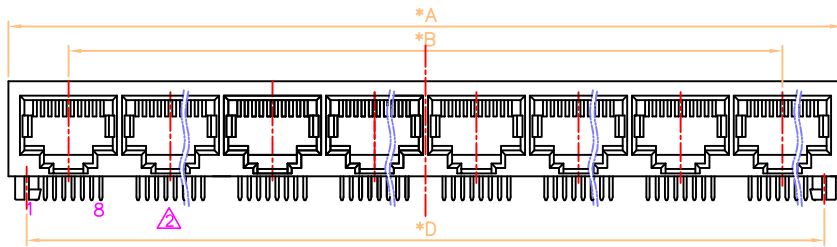


RoHS

THIS IS A RoHS COMPLIANT COMPONENT/PRODUCT.



PC Board Layout
Component Side Shown

NOTES:

ELECTRICAL:

- 1. VOLTAGE RATING : 125 VAC RMS.
- 2. CURRENT RATING : 1.5 AMP.
- 3. CONTACT RESISTANCE : 45 MILLIOHMS MAX.
- 4. INSULATION RESISTANCE : 1000 MEGOHMS MIN. @ 500 VDC.
- 5. DIELECTRIC STRENGTH : 1000 VAC RMS 60Hz, 1MIN.

MECHANICAL:

- 1. HOUSING MATERIAL : GLASS FILLED POLYESTER OR HIGH TEMP. UL94V-0.
- 2. CONTACT MATERIAL : PHOSPHOR BRONZE t=0.35 mm.
- 3. PLATING : GOLD PLATING OVER NICKEL.
- 4. OPERATING LIFE : 750 CYCLES MIN.
- 5. PCB RETENTION PRE-SOLDER : 1 LB MIN.
- 6. PCB RETENTION POST-SOLDER : 10 LBS MIN.

ENVIRONMENTAL:

- 1. STORAGE : -40°C TO +85°C.
- 2. OPERATION : 0°C TO +70°C.

MATES WITH MODULAR PLUG CONFORMING TO TIA-1096-A.

PART NUMBER : N39XX-060-XX

- 2-1X2 PORTS
 - 4-1X4 PORTS
 - 6-1X6 PORTS
 - 8-1X8 PORTS
- 01-HIGH TEMP.
02-POLYESTER
- 1-3u" 2-6u"
 - 3-15u" 4-30u"
 - 5-50u" 7-GOLD FLASH

Frequency MHz	Near-End Cross Talk dB, Min.	Return Loss dB, Min.	Attenuation dB, Max.
1.0	65	30	0.1
4.0	65	30	0.1
8.0	64.9	30	0.1
10.0	63	30	0.1
16.0	58.9	30	0.2
20.0	57	30	0.2
25.0	55	30	0.2
31.25	53.1	30	0.2
62.5	47.1	24.1	0.3
100.0	43	20	0.4

PORTS	DIM"A"±0.15	DIM"B"±0.20	DIM"C"±0.05	DIM"D"±0.15
2	30.48	13.97	25.40	25.40
4	58.42	41.91	53.34	53.34
6	86.36	69.85	81.28	81.28
8	114.30	97.79	109.22	109.22

X1	000000	MODIFY DRAWING	DORIS	110915'
X1	000000	MODIFY DRAWING	KARL	101614'
X1	000000	MODIFY P/N.	KARL	072613'
X0	000000	NEW DESIGN	SAIL	061008
MARK	ECN-NO.	REVISION RECORD	DRAWN	DATE

<p>Contact Technology Co., Ltd.</p>	UNLESS OTHERWISE SPECIFIED TOLERANCE	SCALE	CHECKED
	Dimension Range Tolerance	1/1	APPROVED
	X.X ±0.20	UNIT	mm
	X.XX ±0.15	SIZE	A3
X.XXX ±0.10	ANGLE	±5°	SHEET 1/1
MATERIAL		1XN SIDE ENTRY CAT.5e PCB JACK	
Tooling No.	PART NO. SEE NOTE	REV.	3
	DOC. NO. NN390A060		