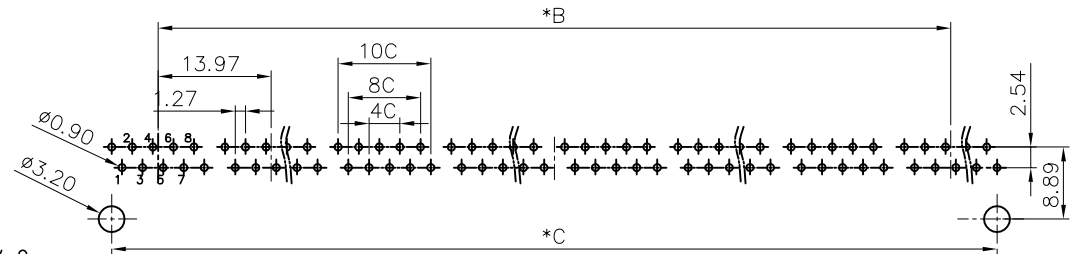
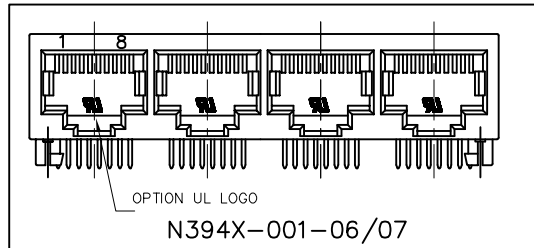
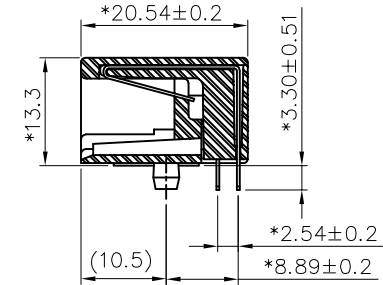
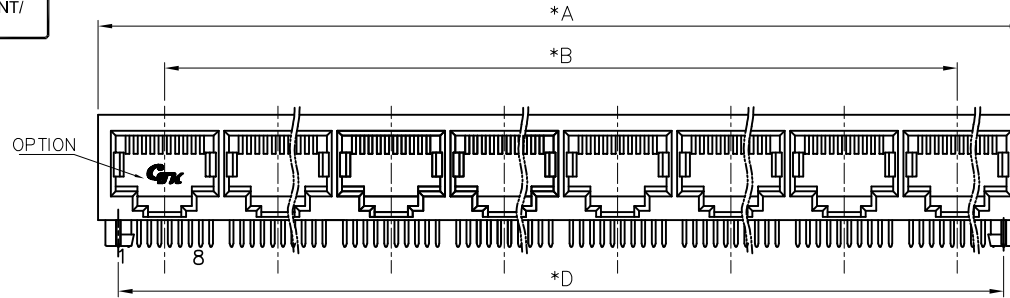


RoHS

THIS IS A RoHS COMPLIANT COMPONENT/PRODUCT.



PC Board Layout
Component Side Shown

NOTES:

ELECTRICAL:

1. VOLTAGE RATING : 125 VAC MIN.
2. CURRENT RATING : 1.5 AMP MIN.
3. CONTACT RESISTANCE : 45 MILLIOHMS MAX.
4. INSULATION RESISTANCE: 1000 MEGOHMS MIN. @ 500 VDC.
5. DIELECTRIC STRENGTH : 1000 VAC 60Hz, 1MIN.

MECHANICAL:

1. HOUSING MATERIAL : GLASS FILLED POLYESTER OR HIGH TEMP. UL94V-0.
2. CONTACT MATERIAL : PHOSPHOR BRONZE t=0.35mm.
3. PLATING : GOLD PLATING OVER NICKEL.
4. OPERATING LIFE : 750 CYCLES MIN.
5. PCB RETENTION PRE-SOLDER : 1 LB MIN.
6. PCB RETENTION POST-SOLDER: 10 LBS MIN.

ENVIRONMENTAL:

1. STORAGE : -40°C TO +85°C.
 2. OPERATION: -40°C TO +85°C.
- MATES WITH MODULAR PLUG CONFORMING TO FCC PART 68, SUBPART F.

- PART NUMBER: N39XX-001-XX
- | | |
|---------------------------------|----------------------------------|
| 01-W/O LOGO POLYESTER BK. 10P8C | 02-W/O LOGO HIGH TEMP. BK. 10P8C |
| 2-1X2 | 03-W/CTK LOGO FR52 YL. 10P8C |
| 4-1X4 | 04-W/O LOGO PBT GY. 10P8C |
| 6-1X6 | 05-W/O LOGO POLYESTER BK. 10P10C |
| 8-1X8 | 06-W/UL LOGO POLYESTER BK. 10P8C |
| | 07-W/UL LOGO POLYESTER BK. 10P4C |
| | 08-W/O LOGO HIGH TEMP. YL. 10P8C |
| | 09-W/O LOGO POLYESTER BK. 10P2C |
| | 10-W/O LOGO HIGH TEMP. BK. 10P4C |
- 1-3u" 2-6u"
3-15u" 4-30u"
5-50u"

PORTS	DIM "A" ±0.10	DIM "B" ±0.20	DIM "C" ±0.05	DIM "D" ±0.15
2	30.48	13.97	25.40	25.40
4	58.42	41.91	53.34	53.34
6	86.36	69.85	81.28	81.28
8	114.30	97.79	109.22	109.22

△x1		ADD NEW P/N	ROCK	113012'
△x1		ADD NEW P/N	QUAN	032312'
△x2		ADD NEW P/N	ROCK	020612'
△x1		ADD NEW P/N(3)	YANG	091009
△x1		ADD NEW P/N(3)	YANG	070909
△x1		ADD NEW P/N(3)	YANG	051109
△x1		ADD NEW P/N(3)	LINGER	090707
△X0	0000000	NEW DESIGN	LINGER	102406
MARK	ECN-NO.	REVISION RECORD	DRAWN	DATE

UNLESS OTHERWISE SPECIFIED TOLERANCE		SCALE	CHECKED
Dimension Range	Tolerance	1/1	
X.X	±0.20	UNIT	APPROVED
X.XX	±0.15	mm	
X.XXX	±0.10	SIZE	
ANGLE	±5°	A3	SHEET 1/1

Contact Technology Co., Ltd.

Material/Plated/Notes
SEE NOTE

NAME
1XN RJ45 SIDE ENTRY JACK 20.57 UTP

Part No.
PART NO. SEE NOTE

Doc. No.
DOC. NO. NN390A001

REV.
J