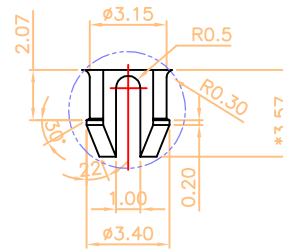
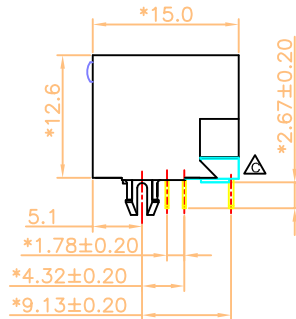
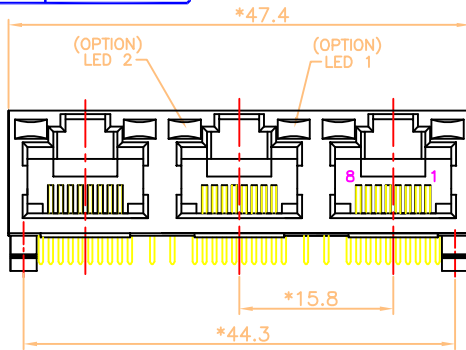


RoHS

THIS IS A RoHS COMPLIANT COMPONENT/PRODUCT.

LED DISPLAY		
PART NO.	LED2	LED1
N3J3X-114-01	GREEN	GREEN
N3J3X-114-02	GREEN	GREEN
N3J3X-114-03	GREEN	GREEN
N3J3X-114-04	GREEN YELLOW	GREEN



DETAIL "K"

**NOTES:**

**ELECTRICAL:**

- VOLTAGE RATING : 125 VAC.
- CURRENT RATING : 1.5 AMP.
- CONTACT RESISTANCE : 30 MILLIOHMS MAX.
- INSULATION RESISTANCE: 1000 MEGOHMS MIN. @ 500 VDC.
- DIELECTRIC STRENGTH : 1000 VAC 60Hz, 1MIN.
- LED RATINGS: FORWARD VOLTAGE: 2.2 VOLTS TYPICAL.  
REVERSE VOLTAGE: 5 VOLTS MAXIMUM.
- OPERATING: 750 CYCLES MIN.

**MECHANICAL:**

- HOUSING MATERIAL : GLASS FILLED POLYESTER OR HIGH TEMP. UL94V-0 BK.
- INSERT MATERIAL : GLASS FILLED POLYESTER UL94V-0.
- BACK PLATE MATERIAL : GLASS FILLED POLYESTER UL94V-0.
- LED SIZE : 3.05\*1.85\*7.0, P=2.54mm.
- CONTACT MATERIAL : PHOSPHOR BRONZE 0.35mm THICKNESS.
- PLATING : GOLD PLATING OVER NICKEL.
- PCB RETENTION PRE-SOLDER : 1 LB MIN.
- PCB RETENTION POST-SOLDER : 10 LBS MIN.

**ENVIRONMENTAL:**

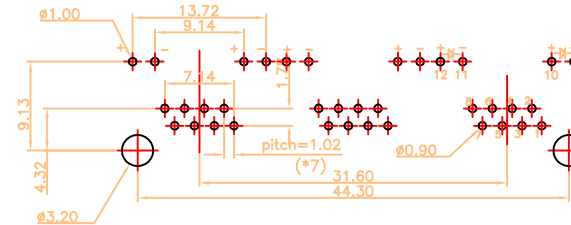
- STORAGE : -40°C TO +85°C.
- OPERATION : -40°C TO +85°C.
- WAVE SOLDERING TEMPERATURE: 255~265°C (5~10 SECONDS)

MATES WITH MODULAR PLUG CONFORMING TO FCC PART 68, SUBPART F.

PART NUMBER: N3J3X-114-0X

1-3u" 2-6u"  
3-15u" 4-30u"  
5-50u"

- 1-LED2:YELLOW,LED1:GREEN POLYESTER W/O LOGO
- 2-LED2:YELLOW,LED1:GREEN HIGH TEMP. W/O LOGO
- 3-LED2:G+Y, LED1:GREEN HIGH TEMP.YELLOW W/O LOGO
- 4-LED2:G+Y, LED1:GREEN POLYESTER YELLOW W/O LOGO
- 5-LED2:YELLOW LED1:GREEN HIGH TEMP YELLOW W/O LOGO
- 6-LED2:YELLOW LED1:GREEN POLYESTER YELLOW W/O LOGO



PCB Layout  
Component Side Shown

△ X2		NEW DESIGN	Andy	062322	
△ X0		ADD NEW P/N.	Joy	061122	
△ X0	000000	NEW DESIGN	YANG	120909	
MARK	ECN-NO.	REVISION RECORD	DRAWN	DATE	
		UNLESS OTHERWISE SPECIFIED TOLERANCE	SCALE	CHECKED	
		Dimension Range	Tolerance	2/1	
		X.X	±0.20	UNIT	APPROVED
		X.XX	±0.15	mm	peter
X.XXX	±0.10	SIZE	A3	SHEET	
X.XXXX	±0.05	ANGLE	±5°	1/1	
Contact Technology Co., Ltd.		NAME			
Material/Plated/Notes		1X3 RJ45 LED JACK, UTP			
SEE NOTE		PART NO.	SEE NOTE	REV.	
Doc No.		NN3J0A114		1	