



Structured Cabling System



Intelligent Cabling System



With CTK Intelligent Cabling System, each action would be recorded, you can avoid data losing while network outages occur. Mapping, configuring and testing the system that helps your company online, 24 / 7.

Standard

UL 60950-1, IEC/ EN 60950-1, First Edition
AS/ NZ 60950-1:2003
EN 55022; EN 55024

■ Monitor

Detailed Network Views
Database Accuracy
Maximizes Utilization of Networking Assets

■ Manage

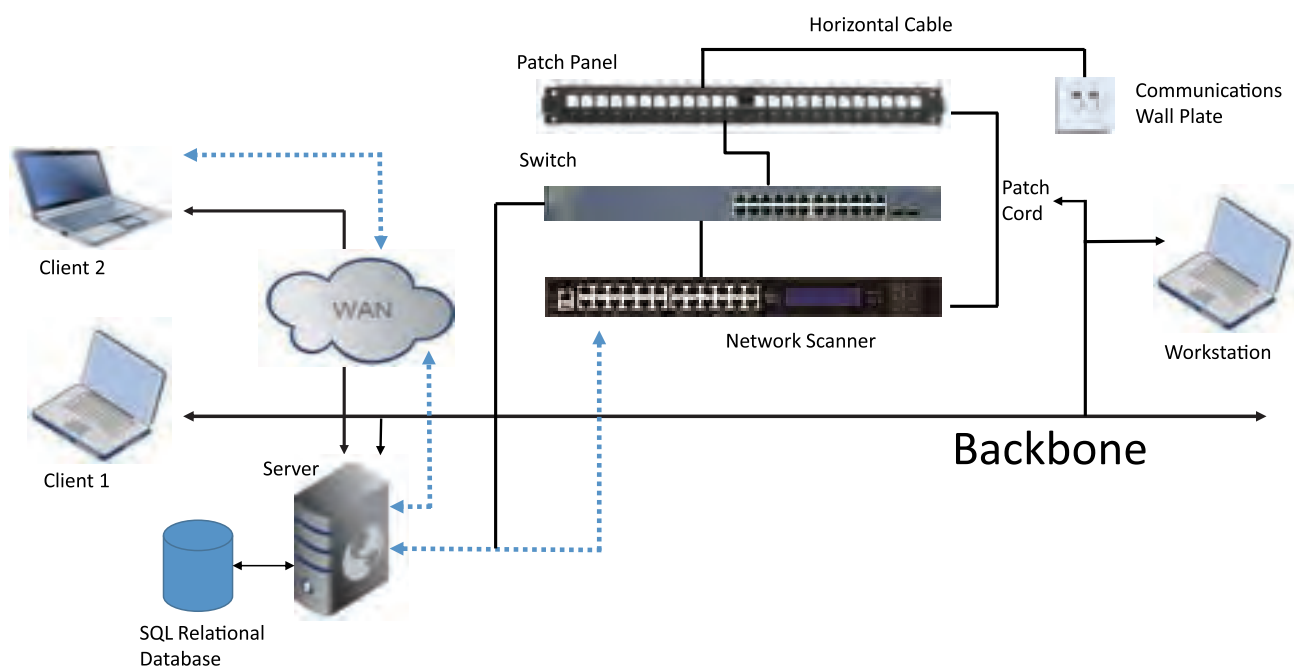
Reduce Downtime
Streamlines Work Order Process
Better Remote Management

■ Protect

Real-time Alert
Improve Response Time
Mac Address records (SNMP)

Intelligent Cabling System





Intelligent Cabling Hardware

Intelligent Cabling Software



Network Controller



Patch Cord



Intelligent Patch Panel



1U Network Controller

Description

- Height: 1U
- Width: 19"
- Power: AC 100V ~ 240V
- Operation Temp.: 0 ~+50
- RJ45 Connection For Connecting Intelligent Patch Panel
- 3" Display Panel



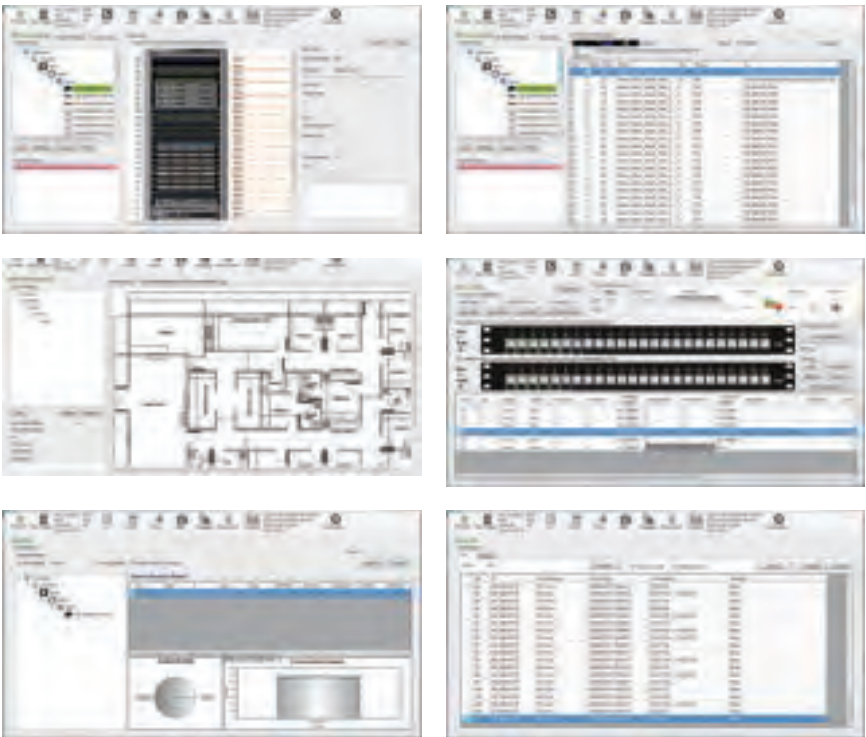
Part No. N426Y-024-01



Intelligent Cabling Operation Screen

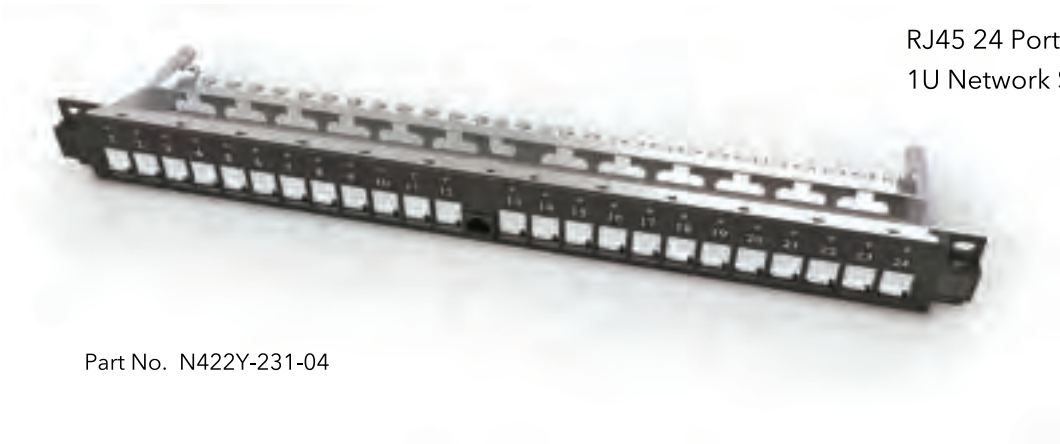
Description

- Asset Management
- Enhanced Security
- Streamlined Work Orders
- EN & CH Bi-Language



Intelligent Patch Panel

The intelligent patch panels offer industry standard apertures with LED indication are compatible with all CTK keystone jacks, fiber keystone adapters and couplers .



Intelligent Patch Cord

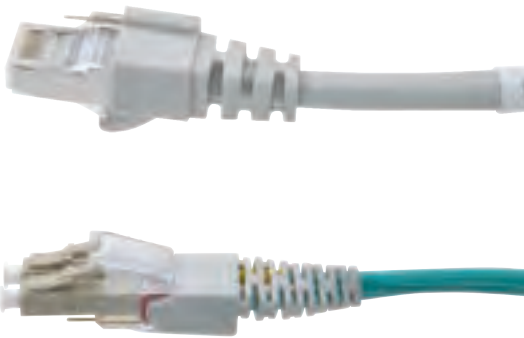
With the specially designed probe on the patch cord, the intelligent copper patch cords can detect the linking status between ports.

Copper Patch Cord

- Available with different performance color & length

Fiber Patch Cord

- Available with SM & MM (OM2~OM4) and different length



Unloaded Patch Panel



The unloaded patch panel offers exceptional flexibility and performance in an angled or flat format in 1U 24 port configuration. The unloaded patch panel offers industry standard apertures and is compatible with all CTK keystone jacks.

Standard

- ISO/ IEC 11801 & TIA-568.2-D

Feature

- Industry standard keystone apertures
- Clear screen printed labeling fields
- Available in 1U 24 port configuration
- Optional rear cable manager available

1U 24 Ports Angled Patch Panel UTP/ STP

Adjustable folding cable management eable a faster and easier way to maintain



Open up to 90°

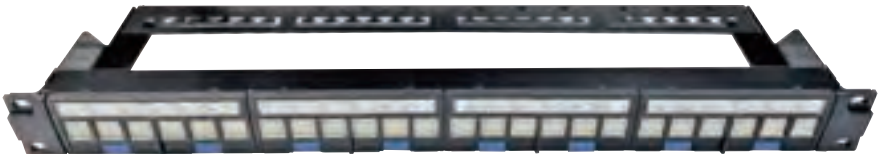


Part No. N422Y-307-01



1U 24 Ports Modular Patch Panel Front-access Type UTP/ STP

Modular front access where engineer/ technician can remove all sections (6 ports/ section) for ease of access during maintenance.



Part No. N422Y-306-01

1U 48 Ports Unloaded Patch Panel



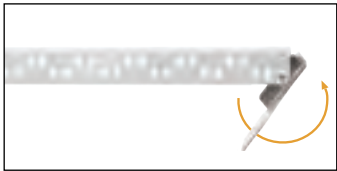
Part No. N422Y-161-03



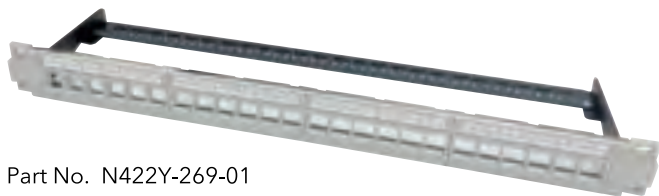
1U 24 Ports 4X6 Unloaded Patch Panel



Part No. N422Y-217-10



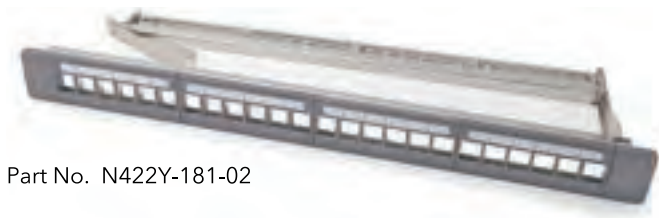
Foldable Cable Management



Part No. N422Y-269-01



Hinged Type Label Holder



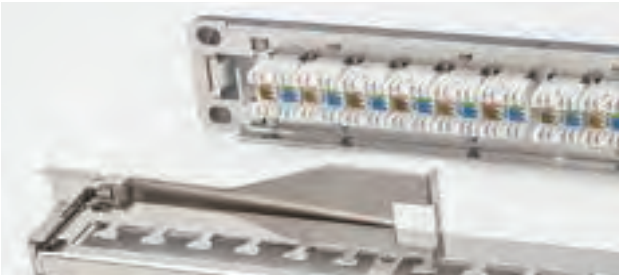
Part No. N422Y-181-02



Detached Type Label Holder

Loaded Patch Panel

Part No. N422Y-062-05 (C6a)
N422Y-062-04 (C6)
N422Y-062-03 (C5e)



Integrated UTP Patch Panel



CTK Integrated UTP Patch Panels are designed to support Ethernet 10GBASE-T (NBASE-T), 5GBASE-T (NBASE-T), 2.5GBASE-T (NBASE-T), 1000BASE-T, 100BASE-T, voice/ data systems and Voice over Internet Protocol (VoIP) systems running over a Cat.6a/ Cat.6/ Cat.5e cabling system, and is backward compatible with existing Cat.5 and voice network infrastructures.

Standard

- ISO/ IEC 11801 & TIA-568.2-D

Feature

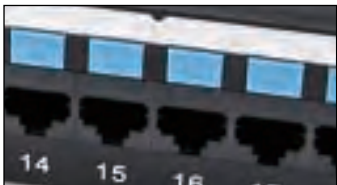
- Configured for T568A and T568B wiring
- Universal IDC for both 110 & Krone tool
- Optional rear cable manager available
- 22~26AWG

1U 24 Ports C6a/ C6/ C5e Integrated UTP Patch Panel



Part No. N4225-235-01 (C6a)
N4225-235-02 (C6)
N4225-235-03 (C5e)

1U 24 Ports C6/C5e Integrated UTP Patch Panel (Icon Type)



Part No. N4225-168-03 (C6)
N4225-170-03 (C5e)

1U 24 Ports C6/C5e Integrated UTP Patch Panel (Label Type)



Part No. N4225-157-03 (C6)
N4225-157-04 (C5e)



1U 48 Ports C6/C5e Integrated UTP Patch Panel



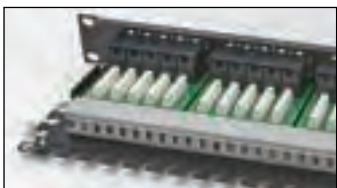
Part No. N422Y-161-05 (C6)
N422Y-161-04 (C5e)



1U 50 Ports C3 Integrated UTP Patch Panel



Part No. N4225-070-03



2U 48 Ports C6/C5e Integrated UTP Patch Panel



Part No. N4225-012-01 (C6)
N4225-007-01 (C5e)



Integrated STP Patch Panel



CTK Integrated STP Patch Panels are designed to support Ethernet 5GBASE-T (NBASE-T), 2.5GBASE-T (NBASE-T), 1000BASE-T, 100BASE-T, voice/ data systems and Voice over Internet Protocol (VoIP) systems running over a Cat.6 / Cat.5e cabling system and is backward compatible with existing, Cat.5 and voice network infrastructures.

Standard

- ISO/ IEC 11801 & TIA-568.2-D

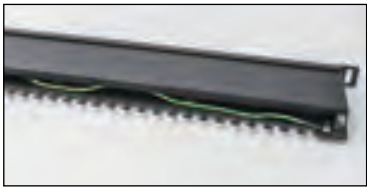
Feature

- Configured for T568A and T568B wiring
- Universal IDC for both 110 & Krone tool
- Optional rear cable manager available
- 22~26AWG

0.5U 24 Ports C6/C5e Integrated STP Patch Panel



Part No. N4425-171-01



1U 24 Ports C6/C5e Integrated STP Patch Panel



Part No. N442Y-063-01 (C6)
N4225-008-01 (C5e)



Cable Management



- Easy to install
- Heavy-duty, ducted design

- Dust-proof and cable-protection
- For 19 inch standard cabinet, 1U



Part No. N424K-077-01



Part No. N422K-078-01

Cat.8 STP Keystone Jack



CTK Cat.8 Keystone Jacks support 25G/ 40GBASE-T Ethernet with full reliability. CTK Keystone Jacks are suitable for assembling with the CTK unloaded patch panels and faceplates for the wall outlet. The Cat.8 Keystone Jacks are designed to keep any data or voice protocol that is capable of running over a Cat.8 cabling system and backward compatible with the existed networking infrastructures.



Part No. N4485-001-0X



Standard

- ANSI/ TIA 568.2-D Category 8 - 2 Connector Permanent Link (24M)
- ISO/ IEC 11801-1 Class I - 2 Connector Permanent Link (24M), up to 2GHz
- Complies with IEC 60512-99 4PPoE

Feature

- The first ETL verified 2 Connector Permanent Link to ISO/ IEC 11801-1 Class I
- Slim type design
- Housing and cover material: Zinc die-casting with nickel plated
- Plastic material: UL94V-0 high intensity PC
- IDC wiring terminal is suitable for using 22~26AWG solid and stranded wires
- IDC wire installation tool- free termination
- Support both of 568A and 568B wiring options



Cat. 6a STP/ UTP Keystone Jack



CTK Cat.6a STP/ UTP Keystone Jacks offer exceptional performance that will support 10GBASE-T Ethernet with complete reliability.

CTK Keystone Jacks are suitable to be assembled with the CTK unloaded patch panels and faceplates for the wall outlet. The Cat.6a keystone jacks are designed to support any data or voice protocol that is capable of running over Cat.6a cabling system, and backward compatible with the existing network infrastructure.

Standard

- ISO/ IEC 11801 & TIA-568.2-D

Feature

- Slimline design
- Exceeds Cat.6a performance standards (500MHz)
- Universal IDC for both 110 & Krone tool
- 568A and 568B wiring options
- 22~26 AWG

Shield

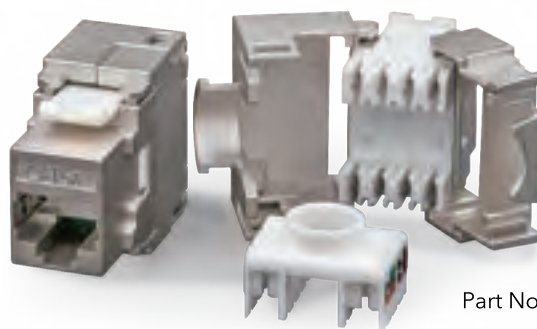
180° C6a Slim Type STP



Part No. N4455-014-02

Shield

180° C6a Die-Cast



Part No. N4455-008-03

Shield

180° C6a Die-Cast STP



Part No. N4455-019-0X

Un-shield

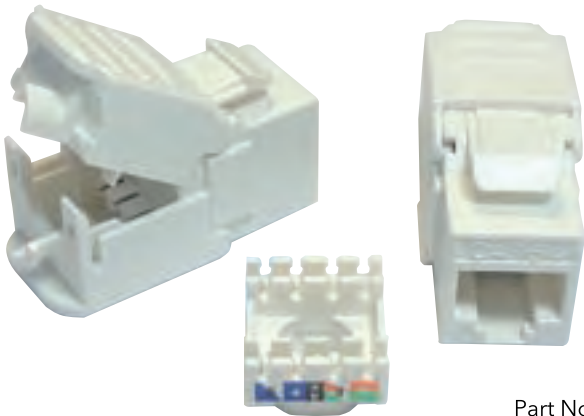
180° C6a UTP



Part No.: N4455-099-01

Un-shield Toolless

180° C6a UTP



Part No. N4455-155-01

Cat. 6 STP/ UTP Keystone Jack



CTK Cat.6 STP/ UTP Keystone Jacks offer exceptional performance that will support 5GBASE-T Ethernet with complete reliability.

CTK Keystone Jacks are suitable to be assembled with the CTK unloaded Patch Panels and faceplates for the wall outlet. The Cat.6 keystone jacks are designed to support any data or voice protocol that is capable of running over Cat.6 cabling system, and backward compatible with the existing network infrastructure.

Standard

- ISO/ IEC 11801 & TIA-568.2-D

Feature

- Slimline design for shield keystone
- PC UL94V-0 with optional color for un-shield keystone
- Exceeds Cat.6 performance standards (250MHz)
- Universal IDC for both 110 & Krone tool
- 568A and 568B wiring options
- 23~26 AWG

Shield

90° C6 STP



Part No. N4432-156-01

Shield

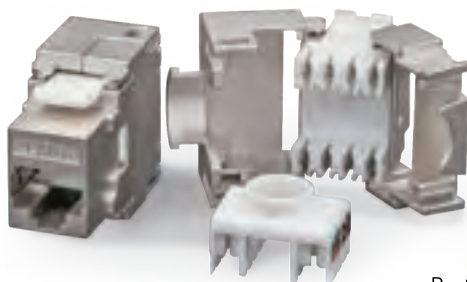
180° C6 Die-Cast STP



Part No. N4435-098-0X

Shield

180° C6 Die-Cast STP



Part No. N4435-066-02

Shield

180° C6 STP



Part No. N4435-069-02

90° C6 UTP



Part No. N4435-001-01

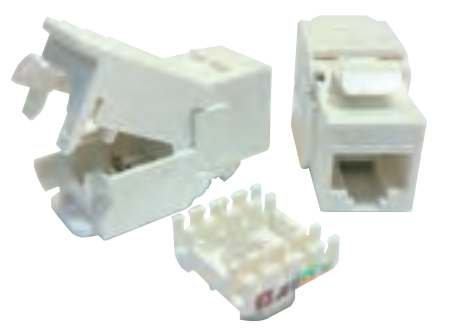
180° C6 UTP



Part No. N4435-050-01

Toolless Type

180° C6 UTP Toolless



Part No. N4435-155-01

180° C6 UTP Toolless w/ Dust Cover



Part No. N4435-075-03

Cat. 5e STP/ UTP Keystone Jack



CTK Cat.5e Keystone Jacks offer exceptional performance that will support 2.5GBASE-T Ethernet with complete reliability.

CTK Keystone Jacks are suitable to be assembled with the CTK unloaded patch panels and faceplates for the wall outlet. The Cat.5e keystone jacks are designed to support any data or voice protocol that is capable of running over Cat.5e cabling system, and backward compatible with the existing network infrastructure.

Standard

- ISO/ IEC 11801 & TIA-568.2-D

Feature

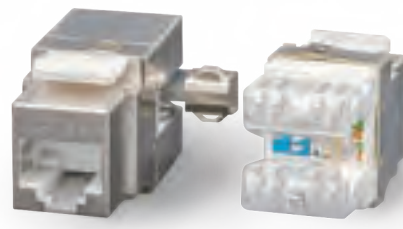
- PC UL94V-0
- Exceeds Cat.5e performance standards (100MHz)
- Universal IDC for both 110 & Krone tool
- 568A and 568B wiring options
- 24~26 AWG

90° C5e STP



Part No. N4421-116-01

180° C5e STP



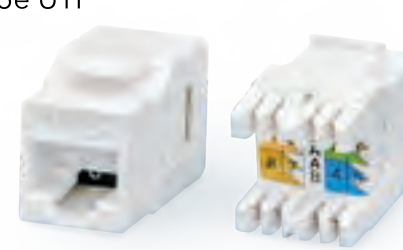
Part No. N4425-069-03

90° C5e UTP



Part No. N4425-014-01

180° C5e UTP



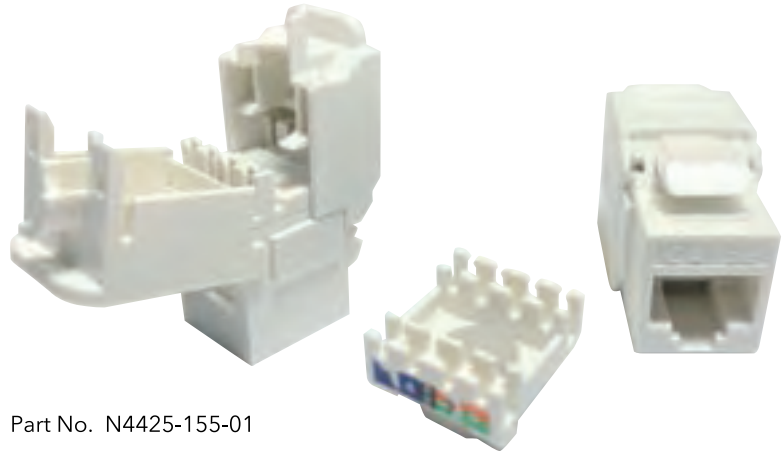
Part No. N4425-060-01

Cat. 5e UTP Toolless Keystone Jack



Toolless Type

180° C5e UTP



Part No. N4425-155-01

Cat. 3 UTP Keystone Jack



CTK Cat.3 Keystone Jacks are designed for wiring up a telephone network or low- speed data network. The design of CTK Cat.3 keystone Jacks provides excellent performance that meets or exceeds the industry standard TIA-568.2-D.

Standard

- ISO/ IEC 11801 & TIA-568.2-D

Feature

- PC UL94V-0 with optional color
- Exceeds Cat.3 performance standards (16MHz)
- Universal IDC for both 110 & Krone tool
- 568A and 568B wiring options
- 24~26 AWG

90° C3 UTP



Part No. N4411-031-01

180° C3 UTP



Part No. N4411-036-01

STP Coupler



CTK FTP coupler offers exceptional performance that will support 10GBASE-T Ethernet with complete reliability. CTK coupler is suitable to be assembled with the CTK unloaded patch panels and faceplates for the wall outlet.

Standard

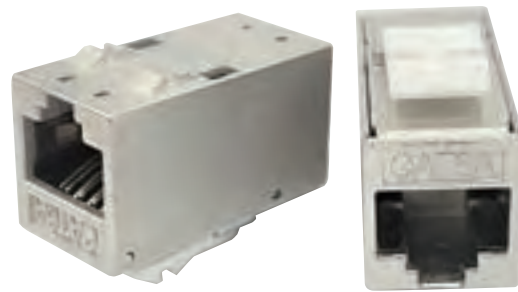
- ISO/ IEC 11801 & TIA-568.2-D

Feature

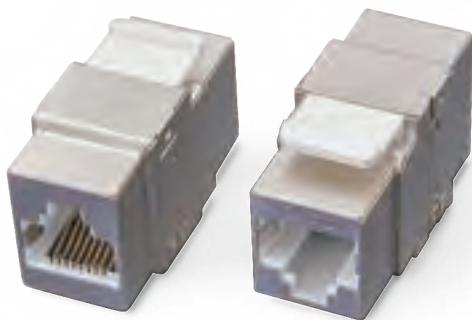
- Exceeds Cat.6a, Cat.6, Cat.5e performance standards
- Straight RJ45 female-female feed through connection
- PC UL94V-0 with metal shielded

Specification

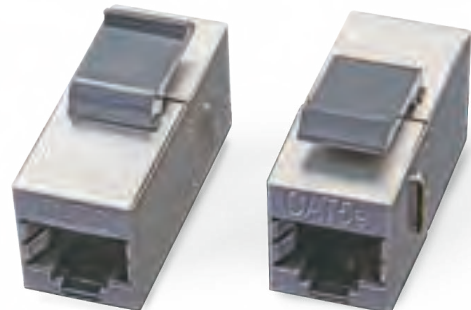
C6a Inline Coupler
C6 Inline Coupler
C5e Inline Coupler
C6a Coupler
C6 Coupler
C5e Coupler



C6a/ C6 STP InLine



C6/ C5e STP



C6/ C5e STP InLine

UTP Coupler



CTK UTP coupler offers exceptional performance that will support 5GBASE-T Ethernet with complete reliability. CTK coupler is suitable to be assembled with the CTK unloaded patch panels and faceplates for the wall outlet.

Standard

- ISO/ IEC 11801 & TIA-568.2-D

Feature

- Exceeds Cat.6, Cat.5e performance standards
- Straight RJ45 female-female feed through connection
- PC UL94V-0 with optional color

Specification

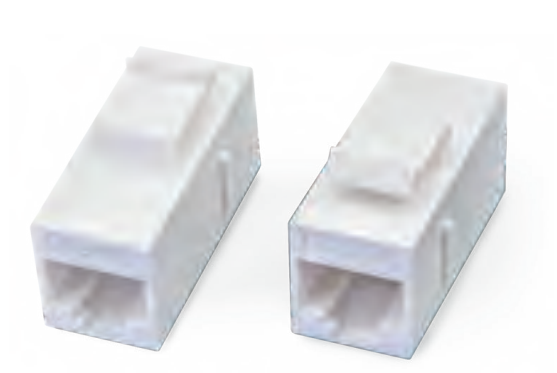
- C6 Inline Coupler
- C5e Inline Coupler
- C6 Coupler
- C5e Coupler



C6/ C5e UTP InLine



C6/ C5e UTP



C6/ C5e UTP InLine

Copper Patch Cord



The copper patch cords are designed to support any data or voice protocol that is capable of running over a Cat.6a cabling system and backward compatible with the existing network infrastructure.

Standard

- ISO/ IEC 11801 & TIA-568.2-D

Feature

- 23AWG
- Optional length available
- Optional color available
- Available with Cat.6a / Cat.6 / Cat.5e
- Available with STP / UTP
- Available with LSZH / PVC
- UL94V-0



C6a/ C6/ C5e STP



C6a/ C6/ C5e UTP

Test Cord



CTK test cord is suitable for industrial, business, home, and any other telecommunication system.

Standard

- ISO/ IEC 11801 & TIA-568.2-D

Feature

- Option of 2 or 4 pole
- Available with RJ45 plug
- UL94V-0



A Type+ RJ45



A Type

Intelligent Copper Patch Cord



CTK intelligent copper patch cords are designed to be used with CTK Intelligent Cabling System. The intelligent copper patch cords support any data or voice protocol that is capable of running over a Cat.6a cabling system and backward compatible with the existing network infrastructure.

Standard

- ISO/ IEC 11801 & TIA-568.2-D

Feature

- 9 wires / 23AWG
- Optional length available
- Optional color available
- Available with Cat.6a / Cat.6 / Cat.5e
- Available with STP / UTP
- Available with LSZH / PVC
- UL94V-0



C6a/ C6/ C5e STP



C6a/ C6/ C5e UTP

Cat.6A STP Field Termination Plug

Standard

- ISO/IEC 11801 Ed.2.2.2011-06
- DIN EN 50173-1:2011-09

Feature

- Power over Ethernet: type I & II
- Load bar for faster and easier wire pattern termination
- Insulation resistance: 1,000 mohms minimum
- Contact resistance: 20 mohms maximum
- Phosphor bronze and gold plating (3~50μ)
- Anti-burn performance: KIRSTE\ PC or PCB (UL94V-0)
- Operation temperature: -40°C to 60°C
- Durability: 750 mating cycles
- Cable jacket diameter from 6 to 9.5mm
- Stranded wire AWG 27 to 22, wire diameter 0.46 to 0.76mm
- Solid wire AWG 26 to 22, wire diameter 0.4 to 0.76mm



IDC Block



IDC terminal block reduce wiring installation time and labor, especially in high-volume applications. The 110 style IDC connection is often used to run through buildings, as shown in the image. In switch rooms, IDC blocks are often built into the back of patch panels to terminate cable runs. At the other end, 110 connections may be used with keystone modules that are attached to wall plates.

Standard

- ISO/ IEC 11801 & TIA-568.2-D

Feature

- 110 & Standard IDC come with press fit & soldering type with 4P, 6P & 8P available
- Q Type comes with press fit & soldering type with 4P & 8P available
- Stackable IDC is available with 3P, 4P & 8P
- 23~26AWG
- UL94V-0
- Option color available



K Type



Q Type



U Type



C6 Type



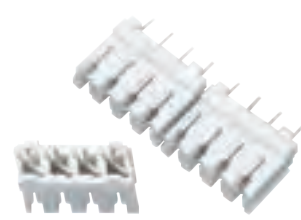
Press Fit 110 Type



Press Fit 110 Type
(Crimp Style)



110 Type



S Type

Telecom Module



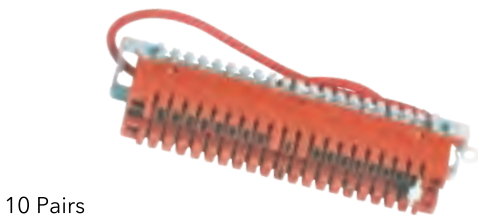
Telecom Module is an insulation- displacement connector for telecommunications. It is a proprietary European alternative to 110 connection block. The Telecom Module is not limited to telecommunications, as it is also popular in broadcast systems, where audio interconnections and their associated control systems often use krone wiring.

Standard

- ISO/ IEC 11801 & TIA-568.2-D

Feature

- 23~26 AWG
- UL94V-0
- Red, Yellow, Grey and white color available



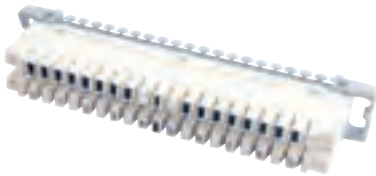
10 Pairs
Earth Module



10 Pairs
Connection Module



100 Pairs Module



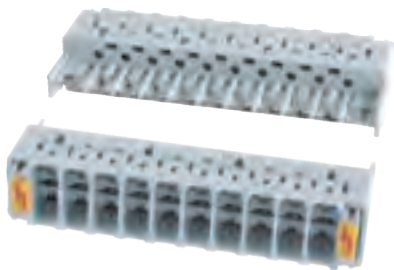
10 Pairs
Disconnection Module

Magazine

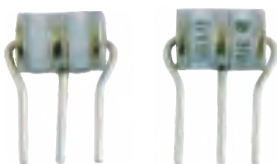


Description

CTK Magazine is mainly used for equipment surge protection to minimise the damages of telecommunication equipment from electrical induction and short circuit.



Magazine



Arrestor

Feature

- With/ Without Arrestor
- UL94V-0
- Compatible with Krone-LSA Plus

Mounting Frame and Distribution Box



CTK mounting frame and distribution box are cost-effective distribution points for basic telecommunication in multi-unit buildings.

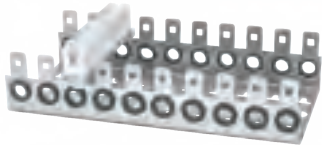
The mounting frame accommodates a variety of telecommunication distribution configurations by hosting up to 200 pairs of connection block; and the distribution box is up to 50 pairs of connection block.

Standard

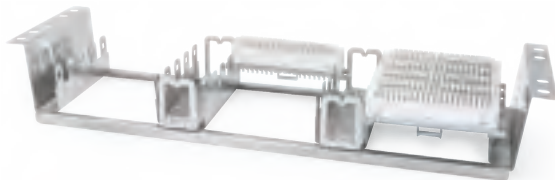
- ISO/IEC 11801 & TIA-568.2-D

Mounting Frame Feature

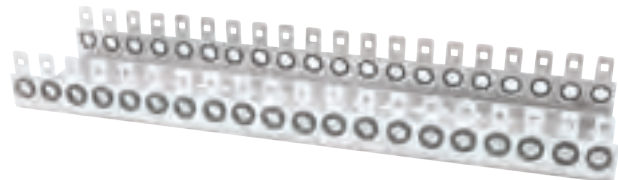
- Option of 100, 150 & 200 pairs
- Rack mount or to be installed in the distribution box
- Stainless with smooth finish



100 Pairs



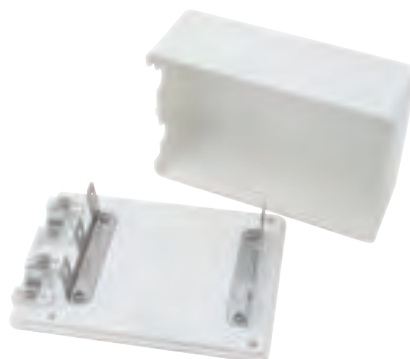
150 Pairs



200 Pairs

Distribution Box Feature

- Option of 30 or 50 pairs
- Connect or replace 110 connection block and 24 port patch panel
- Unique modular design made exclusively from ABS molded plastic
- Wall mounted or to be installed inside of telecom distribution box



110 Connection Block



A 110 block is a type of punch block used to terminate runs of on-premises wiring in a structured cabling system. The designation 110 is also used to describe a type of insulation displacement contact (IDC) connector used to terminate twisted pair cables, which uses a punch-down tool

Standard

- ISO/ IEC 11801 & TIA-568.2-D

Feature

- Options of 50 pairs & 100 pairs
- Options of W/ Leg & W/O Leg
- PC UL94V-0 with Yellow or optional color
- 23~26 AWG



W/ Leg



W/O Leg

Rack Mount Patch Panel



CTK rack mount panel is used in building entrance facilities, telecommunications closets, and equipment rooms to provide fixed cross connections for voice, security, and data applications. Rack version mounts on 19-inch distribution frames.

Standard

- ISO/ IEC 11801 & TIA-568.2-D

Feature

- Option of 100 or 200 pairs
- UL94V-0
- 23~26 AWG
- Available with yellow color



LC Fiber Patch Panel W/ Splice Tray

CTK fiber optic patch panel utilizes a 1U drawer mechanism to assist in the organization of your networking demands. The patch panel has adjustable mounting arms that separate from the chassis so it can be recessed in the cabinet. This particular product is adapted to LC connectors with 24 connections.

Standard

- ISO/ IEC 11801 & TIA-568.2-D



Feature

- For 19 inch standard cabinet, 1U
- Bending Radius > 40mm
- Wide working space, easy to withdraw the fibers when testing and distributing
- Suitable for LC connection
- Can be ordered fully terminated with cabling or pigtails
- MPO option available



Fiber LC Adapter

Optical fiber connectors are used to join optical fibers where a connect/ disconnect capability is required. Mostly been used in telephone company central offices, at installations on customer premises, and in outside plant applications to connect equipment and cables, or to cross- connect cables.

Standard

- Telcordia GR-326-CORE, Issue 4,
- IEC61754,YD/ T 1272

Feature

- Support OM2~OM4
- Compatible with CTK Intelligent Patch Panel



Fiber Patch Cord

Fiber Patch cords are used for connections to CATV (Cable Television), telecommunication networks, computer fiber networks and fiber test equipment. Applications include communication rooms, FTTH (Fiber to The Home), LAN (Local Area Network), FOS (fiber optic sensor), fiber optic communication system, optical fiber connected and transmitted equipment, and defense combat readiness, etc.

Standard

- IEC61754

Part Number	Specification
N481S-013-XX	SM, MM
N481M-025-XX	OM3
N481M-026-XX	OM4

Cable Color Length

Feature

- Available with OM2~OM4
- Different length and color are available



Fiber Wall Plate

CTK supplies different types of fiber optic wall plate outlets, designed to bring fiber to the desk and widely used in multi-floor and high building. As for multi-interface, CTK can customize the ports type according to customer's requirements along with necessary accessories.

Standard

- ISO/ IEC 11801 & TIA-568.2-D

Feature

- Angled design with dust proof
- Removable Label design
- Compatible with fiber adapter
- SC / ST available
- PC/ABS with UL94V-0



MT-RJ Port



SC Single Port



SC Double Ports

Telecom Wall Plate 120 Type



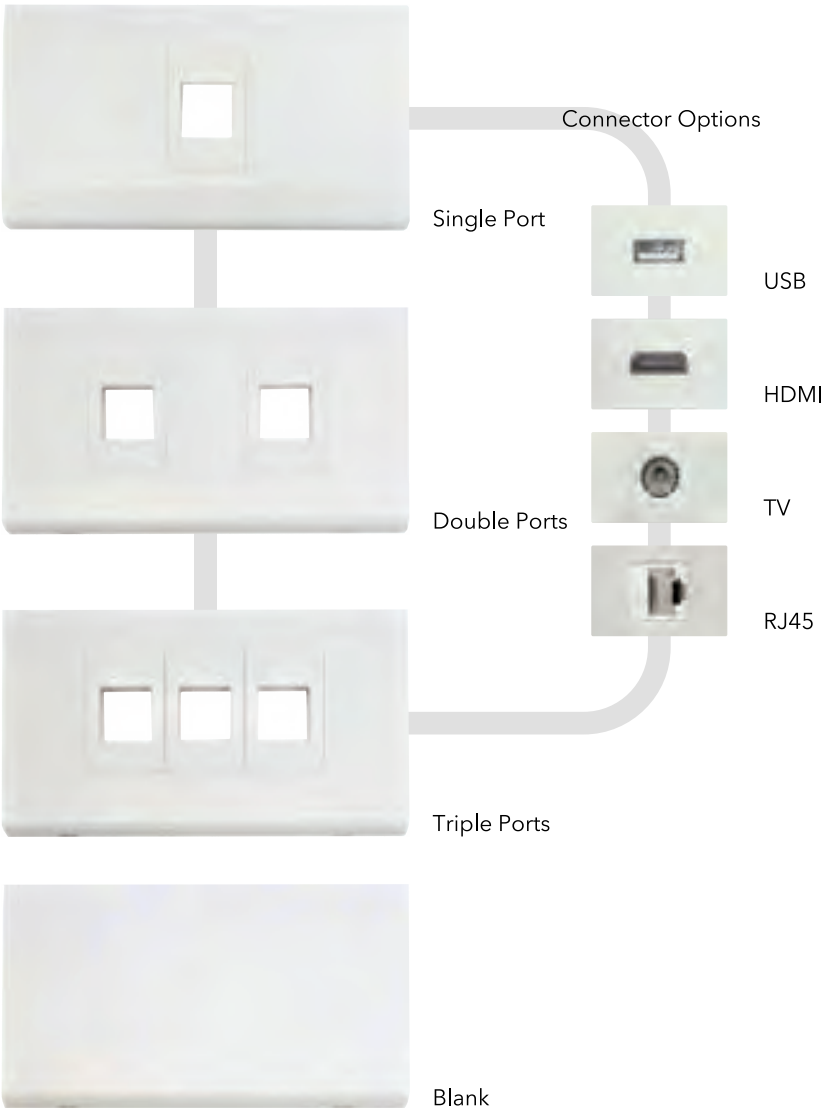
CTK telecom wall plates are the ideal install solution for a home, business and work environment. CTK supplies 120 Type & 86 Type with multiple ports option to meet customers' demands.

Standard

- ISO/ IEC 11801 & TIA-568.2-D

Feature

- Color: White
- PC/ABS with UL94V-0
- Available with 120 & 86 type
- Dust cover design
- Single & multiple ports available
- Easy for installation
- Removable label design

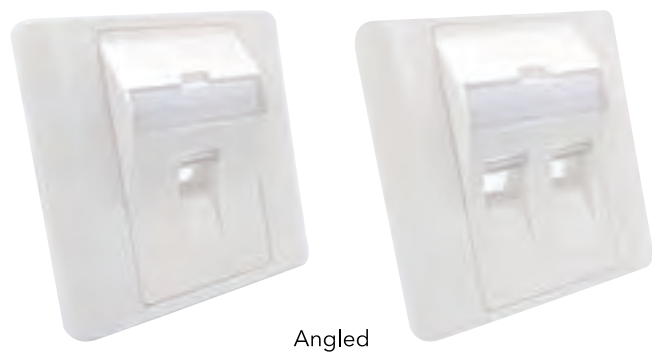


Part Number	Specification
N471Y-056-01	RJ45, 1 Port
N471Y-057-01	RJ45, 2 Ports
N471Y-058-01	RJ45, 3 Ports
N471Y-077-01	Blank
N471Y-078-01	USB Port
N471Y-079-01	HDMI Port
N471Y-080-01	TV Port

86 Type

Specification

- RJ45, 1~4 Ports
- RJ45, 1~2 Ports (Icon)
- TV Port
- Beveled Port, 1~2 Ports



Single Port



TV



Icon



Double Ports



Icon



Triple Ports



Quad Ports



Ground Box



CTK pop-up boxes are the ideal install solution for a home, business and work environment. These items are used for connections to CATV (Cable Television) and telecommunication networks which includes voice & data.

Standard

- ISO/ IEC 11801 & TIA-568.2-D

Feature

- Shape available with round and square
- Pop-up, slide and pull up styles available
- A perfect integration into the floor or office furniture
- Equipped with push and slide locking system to avoid accidental opening by feet
- Water-resistance while it's been closed

Part Number	Specification
N471Y-015-01	1 Port
N471Y-011-01	2 Ports
N471Y-014-01	3 Ports



Pop-up Style

Part Number	Specification
N471Y-026-01	1 Port
N471Y-026-02	2 Ports
N471Y-026-03	3 Ports



Slide& Pull Up Style

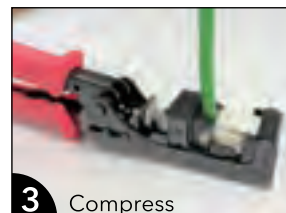
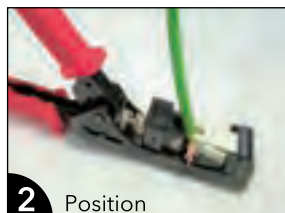
Tooling



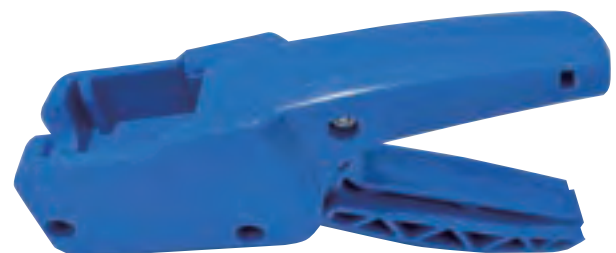
180° Termination Tool

Feature

- Support 180 degree keystone, simply press the to seat and terminate all wires at once accurately and efficiently
- Made out of stainless steel blades



Easy Cable Stripper



Lightweight Crimping Tool