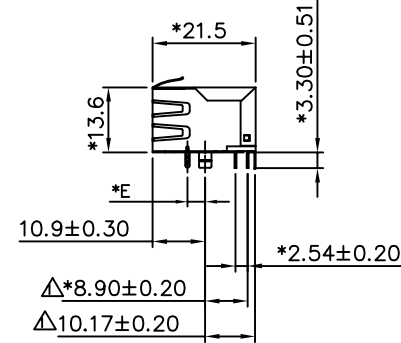
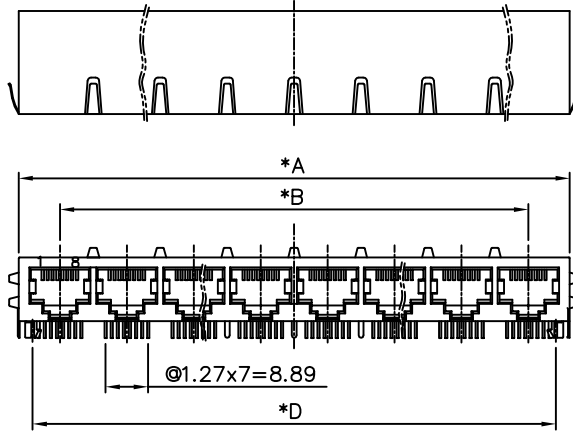


RoHS

THIS IS A RoHS  
COMPLIANT  
COMPONENT/  
PRODUCT.



NOTES:

ELECTRICAL:

- 1. VOLTAGE RATING : 125 VAC.
- 2. CURRENT RATING : 1.5 AMP.
- 3. CONTACT RESISTANCE : 35 MILLIOHMS MAX.
- 4. INSULATION RESISTANCE : 1000 MEGOHMS MIN. @ 500 VDC.
- 5. DIELECTRIC STRENGTH : 1000 VAC 60Hz, 1MIN.

MECHANICAL:

- 1. HOUSING MATERIAL : GLASS FILLED POLYESTER OR HIGH TEMP. UL94V-0.
- 2. CONTACT MATERIAL : PHOSPHOR BRONZE  $\phi$ 0.45mm.
- 3. PLATING : GOLD PLATING OVER NICKEL.
- 4. OPERATING LIFE : 750 CYCLES MIN.
- 5. PCB RETENTION PRE-SOLDER : 1 LB MIN.
- 6. PCB RETENTION POST-SOLDER : 10 LBS MIN.

ENVIRONMENTAL:

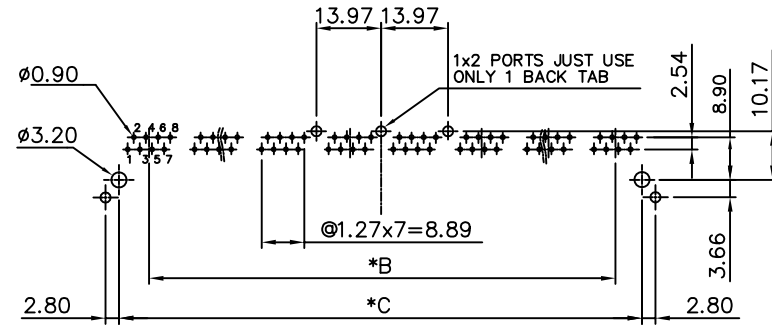
- 1. STORAGE : -40°C TO +85°C.
- 2. OPERATION : -40°C TO +85°C.

MATES WITH MODULAR PLUG CONFORMING TO FCC PART 68, SUBPART F.

PART NUMBER : N39XX-066-XX

- 2-1x2
- 4-1x4
- 6-1x6
- 8-1x8
- 1-3u" 2-6u"
- 3-15u" 4-30u"
- 5-50u" 7-GOLD FLASE

- 01-FRONT PEG 3.68 W/TOP&SIDE EMI TAB HS'G POLYESTER BK. W/3 BACK PEG
- 02-FRONT PEG 3.68 W/TOP&SIDE EMI TAB HS'G HIGH TEMP. BK. W/3 BACK PEG
- 03-FRONT PEG 4.57 W/TOP&SIDE EMI TAB HS'G POLYESTER BK. W/3 BACK PEG
- 04-FRONT PEG 4.57 W/TOP&SIDE EMI TAB HS'G HIGH TEMP BK. W/3 BACK PEG
- 05-FRONT PEG 3.68 W/TOP EMI TAB HS'G POLYESTER BK. W/3 BACK PEG
- 06-FRONT PEG 4.57 W/TOP EMI TAB HS'G POLYESTER BK. W/3 BACK PEG
- 07-FRONT PEG 3.68 W/O EMI TAB HS'G POLYESTER BK. W/3 BACK PEG
- 08-FRONT PEG 4.57 W/TOP EMI TAB HS'G HIGH TEMP BK. W/3 BACK PEG
- 09-FRONT PEG 4.57 W/O EMI TAB HS'G HIGH TEMP BK. W/3 BACK PEG
- 10-FRONT PEG 4.57 W/EMI TAB HS'G POLYESTER BK. W/1 BACK PEG
- 11-FRONT PEG 4.57 W/TOP TAB HS'G HIGH TEMP BK, W/1 BACK PEG W/ CTK LOGO
- 12-FRONT PEG 4.57 W/O EMI TAB HS'G POLYESTER BK. W/3 BACK PEG
- 13-FRONT PEG 4.57 W/O EMI TAB HS'G HIGH TEMP. YL W/O BACK PEG
- 14-FRONT PEG 4.57 W/O EMI TAB HS'G POLYESTER. BK W/O BACK PEG
- 15-FRONT PEG 4.57 W/TOP TAB HS'G POLYESTER BK, W/O BACK PEG



PC Board Layout Component Side Shown

△X1		MODIFY ONE DIM. TOL.	ROCK	112811'
△X1		ADD NEW P/N	ROCK	070710'
△X1		ADD NEW P/N(3)	YANG	041210
△X1		ADD NEW P/N(3)	YANG	032510
△X1		ADD NEW P/N(3)	YANG	051909
△X0	0000000	NEW DESIGN	BOB	030909
MARK	ECN-NO.	REVISION RECORD	DRAWN	DATE

	UNLESS OTHERWISE SPECIFIED TOLERANCE		SCALE	CHECKED
	Dimension Range	Tolerance	1/1	
Contact Technology Co., Ltd.	X.X	±0.20	UNIT	APPROVED
Material/Plated/Notes	x.xx	±0.15	mm	
	x.xxx	±0.10	SIZE	A3
	ANGLE	±5°	SHEET	1/1
SEE NOTE	NAME			
1XN SIDE ENTRY PCB JACK 8P 20.57	PART NO.			SEE NOTE
Doc. No.	DOC. NO.			NN390A066
	REV.			F

PORTS	DIM"A"±0.20	DIM"B"±0.20	DIM"C"±0.10	DIM"D"±0.15
1x2	31.24	13.97	25.40	25.40
1x4	59.18	41.91	53.34	53.34
1x6	87.12	69.85	81.28	81.28
1x8	115.06	97.79	109.22	109.22

E	FRONT PEG 3.68±0.20
	FRONT PEG 4.57±0.20