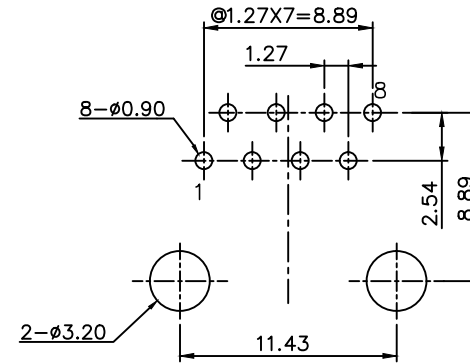
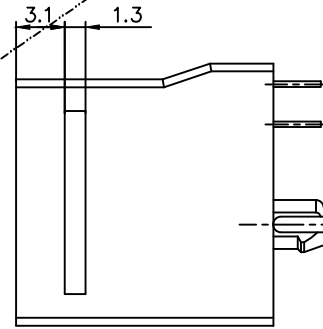
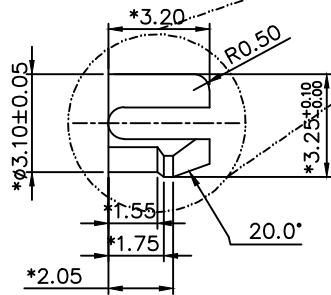
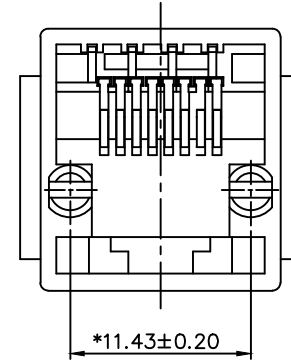
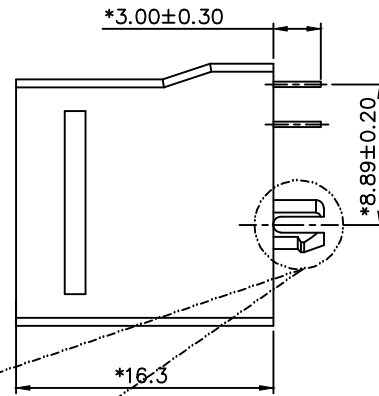
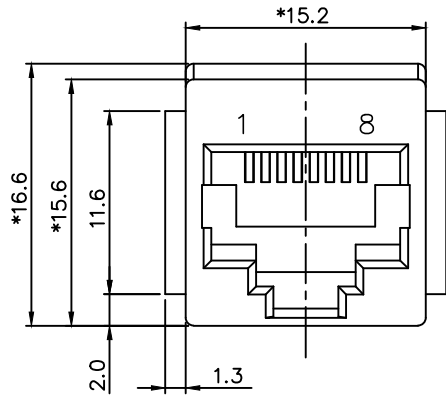


RoHS

THIS IS A RoHS COMPLIANT COMPONENT/PRODUCT.



PC Board Layout
Component Side Shown

NOTES:

ELECTRICAL:

- 1. VOLTAGE RATING : 125 VAC RMS .
- 2. CURRENT RATING : 1.5 AMP .
- 3. CONTACT RESISTANCE : 30 MILLIOHMS MAX.
- 4. INSULATION RESISTANCE : 1000 MEGOHMS MIN. @ 500 VDC.
- 5. DIELECTRIC STRENGTH : 1000 VAC RMS 60Hz, 1MIN.

MECHANICAL:

- 1. HOUSING&INS MATERIAL : GLASS FILLED POLYESTER OR HIGH TEMP. UL94V-0.
- HOUSING&INS COLOR : SHALLOW GREY OR BK.
- 2. CONTACT MATERIAL : PHOSPHOR BRONZ T=0.30mm.
- 3. PLATING : GOLD PLATING OVER NICKEL.
- 4. OPERATING LIFE : 750 CYCLES MIN.
- 5. PCB RETENTION PRE-SOLDER : 1 LB MIN.
- 6. PCB RETENTION POST-SOLDER : 10 LBS MIN.

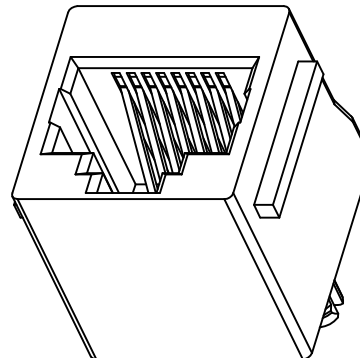
ENVIRONMENTAL:

- 1. STORAGE : -40°C TO +85°C.
- 2. OPERATION : 0°C TO 70°C.

MATES WITH MODULAR PLUG CONFORMING TO TIA-1096-A.

PART NUMBER : K311X-135-XX

1-30u" 2-6u" 3-15u" 01-HIGH TEMP. 8P8C BK. W/PANEL STOP
4-30U" 5-50u"



△ X0	0069000	NEW DESIGN	Andy	052822
MARK	ECN-NO.	REVISION RECORD	DRAWN	DATE
 Contact Technology Co., Ltd.	UNLESS OTHERWISE SPECIFIED TOLERANCE		SCALE	CHECKED
	Dimension Range	Tolerance	2.5/1	
	X.X	±0.20	UNIT	APPROVED
	X.XX	±0.15	mm	
X.XXX	±0.10	SIZE	A3	SHEET 1/1
Material/Plated/Notes	ANGLE	±5°		
SEE NOTE	TOP ENTRY PCB JACK Cat.5 TYPE 8P			
Tooling No.	PART NO.	SEE NOTE	REV.	0
	DOC. NO.	KK310A135		