

- NOTES:**
- ELECTRICAL:**
- VOLTAGE RATING : 125 VAC.
 - CURRENT RATING : 1.5 AMP.
 - CONTACT RESISTANCE : 50 MILLIOHMS MAX.
 - INSULATION RESISTANCE: 1000 MEGOHMS MIN. @ 500 VDC.
 - DIELECTRIC STRENGTH : 1000 VAC 60HZ, 1MIN.
 - LED RATINGS: FORWARD VOLTAGE: 2.2 VOLTS TYPICAL. REVERSE VOLTAGE: 5 VOLTS MAXIMUM.
 - OPERATING: 750 CYCLES MIN.
- MECHANICAL:**
- HOUSING MATERIAL : GLASS FILLED POLYESTER OR HIGH TEMP. UL94V-0 BK.
 - INSERT MATERIAL : GLASS FILLED POLYESTER UL94V-0 BK.
 - BACK PLATE MATERIAL : GLASS FILLED POLYESTER UL94V-0 BK.
 - LED SIZE : 3.05*1.85*0.7*2.54 mm.
 - SHIELD MATERIAL : COPPER ALLOY 0.25 mm THICKNESS NICKEL PLATING.
 - CONTACT MATERIAL : PHOSPHOR BRONZE 0.35mm THICKNESS GOLD PLATING OVER NICKEL.
 - PLATING : GOLD PLATING OVER NICKEL.
 - PCB RETENTION PRE-SOLDER : 1 LB MIN.
 - PCB RETENTION POST-SOLDER: 10 LBS MIN.
- ENVIRONMENTAL:**
- STORAGE : -40°C to +85°C.
 - OPERATION : -40°C to +85°C.
 - WAVE SOLDERING TEMPERATURE: 255~285°C (5-10 SECONDS)
- MATES WITH MODULAR PLUG CONFORMING TO TA-1096-A.

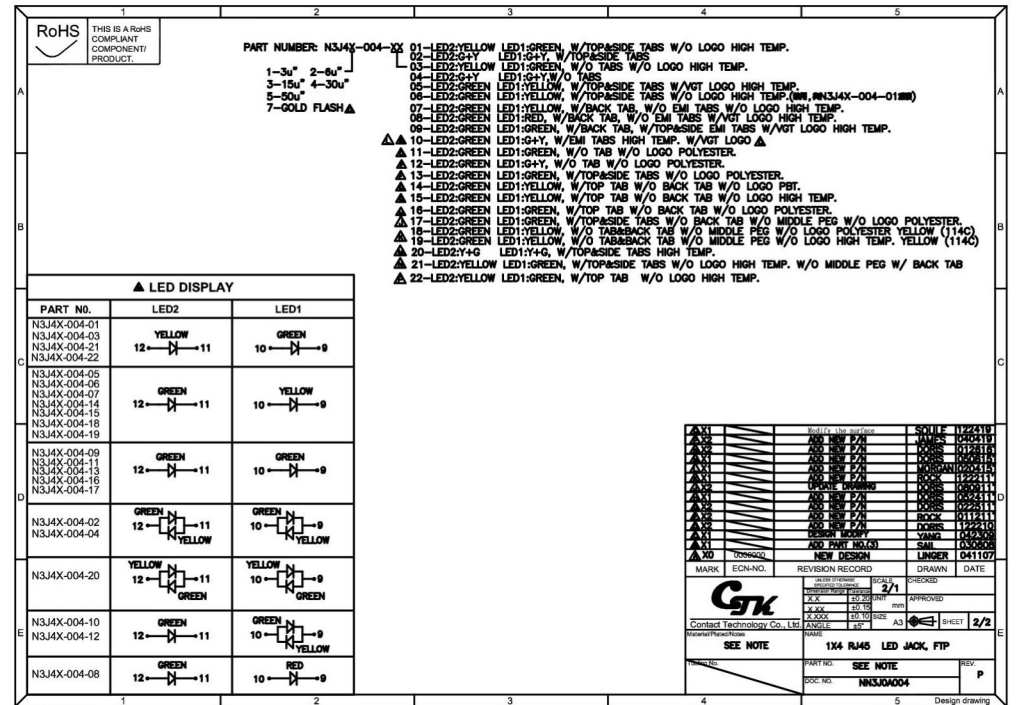
REV	DESCRIPTION	DATE	BY	CHKD
1	NEW DESIGN	041107	LSNER	G41107
2	NEW DESIGN	030208	SML	030208
3	YANG	022210	YANG	022210
4	DOCS	022211	DOCS	022211
5	DOCS	022211	DOCS	022211
6	DOCS	022211	DOCS	022211
7	DOCS	022211	DOCS	022211
8	DOCS	022211	DOCS	022211
9	DOCS	022211	DOCS	022211
10	DOCS	022211	DOCS	022211
11	DOCS	022211	DOCS	022211
12	DOCS	022211	DOCS	022211
13	DOCS	022211	DOCS	022211
14	DOCS	022211	DOCS	022211
15	DOCS	022211	DOCS	022211
16	DOCS	022211	DOCS	022211
17	DOCS	022211	DOCS	022211
18	DOCS	022211	DOCS	022211
19	DOCS	022211	DOCS	022211
20	DOCS	022211	DOCS	022211
21	DOCS	022211	DOCS	022211
22	DOCS	022211	DOCS	022211
23	DOCS	022211	DOCS	022211
24	DOCS	022211	DOCS	022211
25	DOCS	022211	DOCS	022211
26	DOCS	022211	DOCS	022211
27	DOCS	022211	DOCS	022211
28	DOCS	022211	DOCS	022211
29	DOCS	022211	DOCS	022211
30	DOCS	022211	DOCS	022211

MARK	EDN-NO.	REVISION RECORD	SCALE	DRAWN	DATE
			3/1		
			APPROVED		
			DATE		
			ANGLE	AS	SHEET 1/2

REV	DESCRIPTION	DATE	BY	CHKD
1	NEW DESIGN	041107	LSNER	G41107
2	NEW DESIGN	030208	SML	030208
3	YANG	022210	YANG	022210
4	DOCS	022211	DOCS	022211
5	DOCS	022211	DOCS	022211
6	DOCS	022211	DOCS	022211
7	DOCS	022211	DOCS	022211
8	DOCS	022211	DOCS	022211
9	DOCS	022211	DOCS	022211
10	DOCS	022211	DOCS	022211
11	DOCS	022211	DOCS	022211
12	DOCS	022211	DOCS	022211
13	DOCS	022211	DOCS	022211
14	DOCS	022211	DOCS	022211
15	DOCS	022211	DOCS	022211
16	DOCS	022211	DOCS	022211
17	DOCS	022211	DOCS	022211
18	DOCS	022211	DOCS	022211
19	DOCS	022211	DOCS	022211
20	DOCS	022211	DOCS	022211
21	DOCS	022211	DOCS	022211
22	DOCS	022211	DOCS	022211
23	DOCS	022211	DOCS	022211
24	DOCS	022211	DOCS	022211
25	DOCS	022211	DOCS	022211
26	DOCS	022211	DOCS	022211
27	DOCS	022211	DOCS	022211
28	DOCS	022211	DOCS	022211
29	DOCS	022211	DOCS	022211
30	DOCS	022211	DOCS	022211

NEN-00-008

NFEN-00-024 Rev.A



- PART NUMBER: NSJ4X-004-XX**
- 1-3u" 2-6u" J
 - 3-15u" 4-30u"
 - 5-50u"
 - 7-GOLD FLASH ▲
- 01-LED2:YELLOW LED1:GREEN, W/TOP&SIDE TABS W/O LOGO HIGH TEMP.
- 02-LED2:Y LED1:G+Y, W/TOP&SIDE TABS
- 03-LED2:YELLOW LED1:GREEN, W/O TABS W/O LOGO HIGH TEMP.
- 04-LED2:Y+Y LED1:G+Y W/O TABS
- 05-LED2:GREEN LED1:YELLOW, W/TOP&SIDE TABS W/VT LOGO HIGH TEMP.
- 06-LED2:GREEN LED1:YELLOW, W/TOP&SIDE TABS W/O LOGO HIGH TEMP.(HM, NSJ4X-004-01HM)
- 07-LED2:GREEN LED1:YELLOW, W/BACK TAB, W/O EMI TABS W/O LOGO HIGH TEMP.
- 08-LED2:GREEN LED1:RED, W/BACK TAB, W/O EMI TABS W/VT LOGO HIGH TEMP.
- 09-LED2:GREEN LED1:GREEN, W/BACK TAB, W/TOP&SIDE EMI TABS W/VT LOGO HIGH TEMP.
- ▲ 10-LED2:GREEN LED1:G+Y, W/EMI TABS HIGH TEMP. W/VT LOGO ▲
- ▲ 11-LED2:GREEN LED1:GREEN, W/O TAB W/O LOGO POLYESTER.
- ▲ 12-LED2:GREEN LED1:G+Y, W/O TAB W/O LOGO POLYESTER.
- ▲ 13-LED2:GREEN LED1:GREEN, W/TOP&SIDE TABS W/O LOGO POLYESTER.
- ▲ 14-LED2:GREEN LED1:YELLOW, W/TOP TAB W/O BACK TAB W/O LOGO PBT.
- ▲ 15-LED2:GREEN LED1:YELLOW, W/TOP TAB W/O BACK TAB W/O LOGO HIGH TEMP.
- ▲ 16-LED2:GREEN LED1:GREEN, W/TOP TAB W/O BACK TAB W/O LOGO POLYESTER.
- ▲ 17-LED2:GREEN LED1:GREEN, W/TOP&SIDE TABS W/O BACK TAB W/O MIDDLE PEG W/O LOGO POLYESTER.
- ▲ 18-LED2:GREEN LED1:YELLOW, W/O TAB&BACK TAB W/O MIDDLE PEG W/O LOGO POLYESTER YELLOW (114C)
- ▲ 19-LED2:GREEN LED1:YELLOW, W/O TAB&BACK TAB W/O MIDDLE PEG W/O LOGO HIGH TEMP. YELLOW (114C)
- ▲ 20-LED2:Y+O LED1:Y+G, W/TOP&SIDE TABS HIGH TEMP.
- ▲ 21-LED2:YELLOW LED1:GREEN, W/TOP&SIDE TABS W/O LOGO HIGH TEMP. W/O MIDDLE PEG W/ BACK TAB
- ▲ 22-LED2:YELLOW LED1:GREEN, W/TOP TAB W/O LOGO HIGH TEMP.

▲ LED DISPLAY

PART NO.	LED2	LED1
NSJ4X-004-01		
NSJ4X-004-03	YELLOW	GREEN
NSJ4X-004-22	12 → 11	10 → 9
NSJ4X-004-05		
NSJ4X-004-06	GREEN	YELLOW
NSJ4X-004-07		
NSJ4X-004-14	12 → 11	10 → 9
NSJ4X-004-15		
NSJ4X-004-18	GREEN	GREEN
NSJ4X-004-19		
NSJ4X-004-09		
NSJ4X-004-11	12 → 11	10 → 9
NSJ4X-004-13		
NSJ4X-004-16	GREEN	YELLOW
NSJ4X-004-17		
NSJ4X-004-02	GREEN	GREEN
NSJ4X-004-04	12 → 11	10 → 9
	YELLOW	YELLOW
NSJ4X-004-20	12 → 11	10 → 9
	GREEN	GREEN
NSJ4X-004-10	GREEN	GREEN
NSJ4X-004-12	12 → 11	10 → 9
	GREEN	YELLOW
NSJ4X-004-08	GREEN	RED
	12 → 11	10 → 9

REV	DESCRIPTION	DATE	BY	CHKD
1	NEW DESIGN	041107	LSNER	G41107
2	NEW DESIGN	030208	SML	030208
3	YANG	022210	YANG	022210
4	DOCS	022211	DOCS	022211
5	DOCS	022211	DOCS	022211
6	DOCS	022211	DOCS	022211
7	DOCS	022211	DOCS	022211
8	DOCS	022211	DOCS	022211
9	DOCS	022211	DOCS	022211
10	DOCS	022211	DOCS	022211
11	DOCS	022211	DOCS	022211
12	DOCS	022211	DOCS	022211
13	DOCS	022211	DOCS	022211
14	DOCS	022211	DOCS	022211
15	DOCS	022211	DOCS	022211
16	DOCS	022211	DOCS	022211
17	DOCS	022211	DOCS	022211
18	DOCS	022211	DOCS	022211
19	DOCS	022211	DOCS	022211
20	DOCS	022211	DOCS	022211
21	DOCS	022211	DOCS	022211
22	DOCS	022211	DOCS	022211
23	DOCS	022211	DOCS	022211
24	DOCS	022211	DOCS	022211
25	DOCS	022211	DOCS	022211
26	DOCS	022211	DOCS	022211
27	DOCS	022211	DOCS	022211
28	DOCS	022211	DOCS	022211
29	DOCS	022211	DOCS	022211
30	DOCS	022211	DOCS	022211

MARK	EDN-NO.	REVISION RECORD	SCALE	DRAWN	DATE
			3/1		
			APPROVED		
			DATE		
			ANGLE	AS	SHEET 2/2

REV	DESCRIPTION	DATE	BY	CHKD
1	NEW DESIGN	041107	LSNER	G41107
2	NEW DESIGN	030208	SML	030208
3	YANG	022210	YANG	022210
4	DOCS	022211	DOCS	022211
5	DOCS	022211	DOCS	022211
6	DOCS	022211	DOCS	022211
7	DOCS	022211	DOCS	022211
8	DOCS	022211	DOCS	022211
9	DOCS	022211	DOCS	022211
10	DOCS	022211	DOCS	022211
11	DOCS	022211	DOCS	022211
12	DOCS	022211	DOCS	022211
13	DOCS	022211	DOCS	022211
14	DOCS	022211	DOCS	022211
15	DOCS	022211	DOCS	022211
16	DOCS	022211	DOCS	022211
17	DOCS	022211	DOCS	022211
18	DOCS	022211	DOCS	022211
19	DOCS	022211	DOCS	022211
20	DOCS	022211	DOCS	022211
21	DOCS	022211	DOCS	022211
22	DOCS	022211	DOCS	022211
23	DOCS	022211	DOCS	022211
24	DOCS	022211	DOCS	022211
25	DOCS	022211	DOCS	022211
26	DOCS	022211	DOCS	022211
27	DOCS	022211	DOCS	022211
28	DOCS	022211	DOCS	022211
29	DOCS	022211	DOCS	022211
30	DOCS	022211	DOCS	022211

NEN-00-008

NFEN-00-024 Rev.A