

PC Board Layout Component Side Shown

△ X2	ADD NEW P/N(1)	Andy	101121	*
△ X1	ADD NEW P/N(1)	Joy	091020	*
△ X1	UPDATE N39XX-009-09	DORIS	091714	*
△ X2	ADD ONE BOTTOM VIEW	ROCK	091812	*
△ X1	MODIFY DRAWING	ROCK	111511	*
△ X1	MODIFY DRAWING	ROCK	012411	*
△ X1	ADD NEW P/N(1)	YANG	010410	*
△ X1	ADD NEW P/N(1)	PETER	090508	*
△ X3	ADD NEW P/N(1)	SAIL	061108	*
△ X1	ADD NEW P/N(1)	LINGER	081307	*
△ X1	ADD NEW P/N(3)	LINGER	052807	*
△ X1	ADD NEW P/N(1)	LINGER	022307	*
△ X1	ADD NEW P/N	LINGER	121306	*
△ X0	NEW DESIGN	LINGER	111006	*

PORT	MIN	"B" ±0.15	"A" ±0.25	"C" ±0.10
2X2	25.4	31.24	13.97	
2X4	53.34	59.18	41.91	
2X5	67.35	73.15	55.88	
2X6	81.28	87.12	69.85	
2X8	109.22	115.06	97.78	△

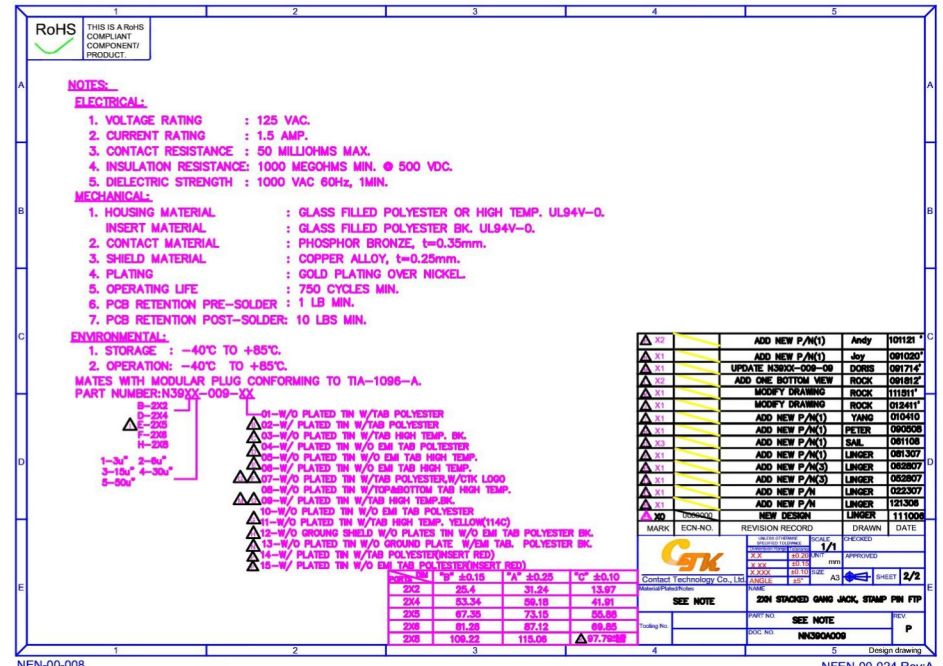
CSK
Contact Technology Co., Ltd.
Material/Plating/Notes

SCALE: 1/1
CHECKED: APPROVED: 1/1

NAME: SEE NOTE
PART NO: SEE NOTE
DOC NO: NN390A009

SHEET 1/2

DATE: 05
Design drawing



NOTES:

- ELECTRICAL:**
- VOLTAGE RATING : 125 VAC.
 - CURRENT RATING : 1.5 AMP.
 - CONTACT RESISTANCE : 50 MILLIOHMS MAX.
 - INSULATION RESISTANCE: 1000 MEGOHMS MIN. @ 500 VDC.
 - DIELECTRIC STRENGTH : 1000 VAC 60Hz, 1MIN.
- MECHANICAL:**
- HOUSING MATERIAL : GLASS FILLED POLYESTER OR HIGH TEMP. UL94V-0.
 - INSERT MATERIAL : GLASS FILLED POLYESTER BK. UL94V-0.
 - CONTACT MATERIAL : PHOSPHOR BRONZE, t=0.35mm.
 - SHIELD MATERIAL : COPPER ALLOY, t=0.25mm.
 - PLATING : GOLD PLATING OVER NICKEL.
 - OPERATING LIFE : 750 CYCLES MIN.
 - PCB RETENTION PRE-SOLDER : 1 LB MIN.
 - PCB RETENTION POST-SOLDER: 10 LBS MIN.
- ENVIRONMENTAL:**
- STORAGE : -40°C TO +85°C.
 - OPERATION : -40°C TO +85°C.
- MATES WITH MODULAR PLUG CONFORMING TO TIA-1095-A.
PART NUMBER: N39XX-009-XX

- △ 01-W/O PLATED TIN W/TAB POLYESTER
- △ 02-W/ PLATED TIN W/TAB POLYESTER
- △ 03-W/O PLATED TIN W/TAB HIGH TEMP. BK.
- △ 04-W/ PLATED TIN W/O EM TAB POLYESTER
- △ 05-W/O PLATED TIN W/O EM TAB HIGH TEMP.
- △ 06-W/ PLATED TIN W/O EM TAB HIGH TEMP.
- △ 07-W/O PLATED TIN W/TAB POLYESTER/W/CTK LOGO
- △ 08-W/O PLATED TIN W/TOP/BOTTOM TAB HIGH TEMP.
- △ 09-W/ PLATED TIN W/TAB HIGH TEMP. BK.
- △ 10-W/O PLATED TIN W/O EM TAB POLYESTER
- △ 11-W/O PLATED TIN W/TAB HIGH TEMP. YELLOW(Y14C)
- △ 12-W/O GROUND SHIELD W/O PLATED TIN W/O EM TAB POLYESTER BK.
- △ 13-W/O PLATED TIN W/O GROUND PLATE W/EM TAB. POLYESTER BK.
- △ 14-W/ PLATED TIN W/TAB POLYESTER(INSERT RED)
- △ 15-W/ PLATED TIN W/O EM TAB POLYESTER(INSERT RED)

PORT	MIN	"B" ±0.15	"A" ±0.25	"C" ±0.10
2X2	25.4	31.24	13.97	
2X4	53.34	59.18	41.91	
2X5	67.35	73.15	55.88	
2X6	81.28	87.12	69.85	
2X8	109.22	115.06	97.78	△

△ X1	ADD NEW P/N(1)	Andy	101121	*
△ X1	ADD NEW P/N(1)	Soy	091020	*
△ X1	UPDATE N39XX-009-09	DORIS	091714	*
△ X1	ADD ONE BOTTOM VIEW	ROCK	091812	*
△ X1	MODIFY DRAWING	ROCK	111511	*
△ X1	MODIFY DRAWING	ROCK	012411	*
△ X1	ADD NEW P/N(1)	YANG	010410	*
△ X1	ADD NEW P/N(1)	PETER	090508	*
△ X1	ADD NEW P/N(1)	SAIL	061108	*
△ X1	ADD NEW P/N(1)	LINGER	081307	*
△ X1	ADD NEW P/N(3)	LINGER	052807	*
△ X1	ADD NEW P/N(1)	LINGER	022307	*
△ X1	ADD NEW P/N	LINGER	121306	*
△ X1	NEW DESIGN	LINGER	111006	*

MARK: ECN-NO. REVISION RECORD DRAWN DATE

CSK
Contact Technology Co., Ltd.
Material/Plating/Notes

SCALE: 1/1
CHECKED: APPROVED: 2/2

NAME: SEE NOTE
PART NO: SEE NOTE
DOC NO: NN390A009

SHEET 2/2

DATE: 05
Design drawing