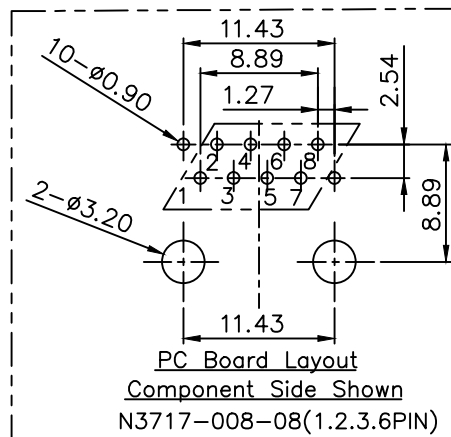
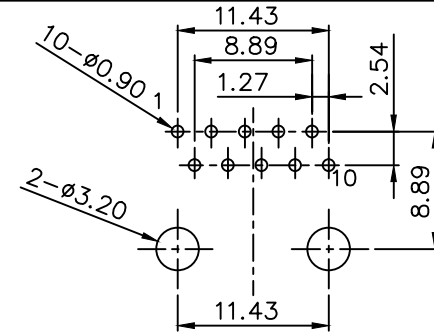
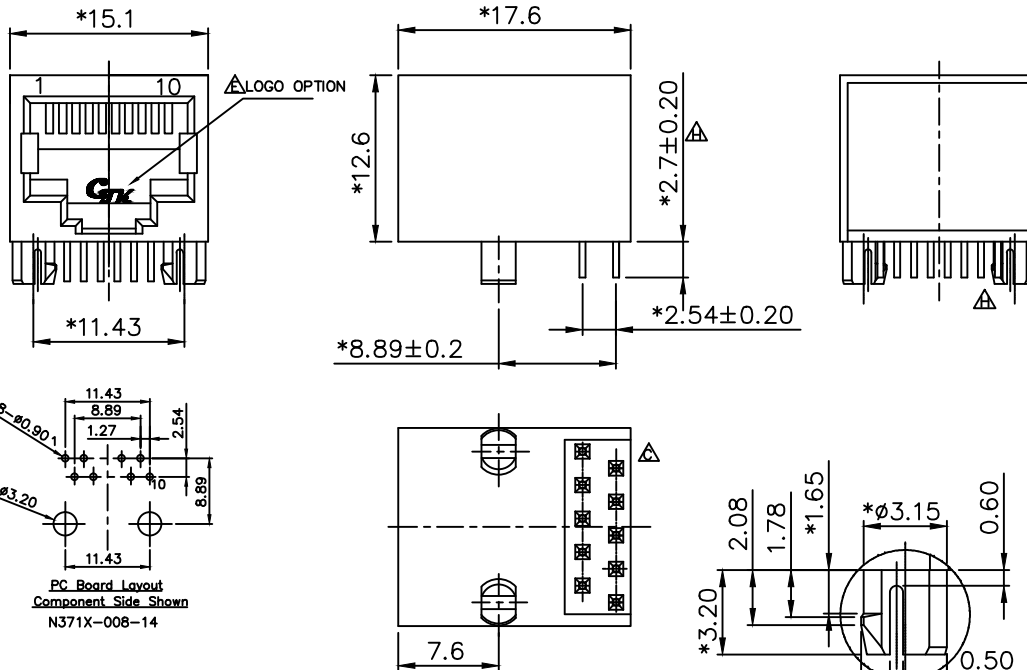


RoHS

THIS IS A RoHS COMPLIANT COMPONENT/PRODUCT.



NOTES:

ELECTRICAL:

- VOLTAGE RATING : 125 VAC.
- CURRENT RATING : 1.5 AMP.
- CONTACT RESISTANCE : 45 MILLIOHMS MAX.
- INSULATION RESISTANCE:1000 MEGOHMS MIN. @ 500 VDC.
- DIELECTRIC STRENGTH : 1000 VAC 60Hz, 1MIN.

MECHANICAL:

- HOUSING MATERIAL : GLASS FILLED POLYESTER OR HIGH TEMP. UL94V-0.
- CONTACT MATERIAL : PHOSPHOR BRONZE ∅0.46 mm.
- PLATING : GOLD PLATING OVER NICKEL.
- OPERATING LIFE : 750 CYCLES MIN.
- PCB RETENTION PRE-SOLDER : 1 LB MIN.
- PCB RETENTION POST-SOLDER: 10 LBS MIN.

ENVIRONMENTAL:

- STORAGE : -40°C TO +85°C.
- OPERATION : -40°C TO +85°C.

MATES WITH MODULAR PLUG CONFORMING TO TIA-1096-A.

PART NUMBER: N371X-008-XX

- 1- 3u" 2- 6u"
- 3-15u" 4-30u"
- 5-50u"
- 7-GOLD FLASH
- △ B-0.5u"
- 01-HIGH TEMP. YL.(HS"G&IN"S YL) 10P8C
- 02-POLYESTER BK. 10P8C
- 03-HIGH TEMP. BK. 10P8C
- 04-POLYESTER BK. 10P10C
- 05-POLYESTER YL.(HS"G&IN"S YL) 10P8C
- 06-POLYESTER GY.(HS"G&IN"S GY) 10P8C
- 07-HIGH TEMP. GY.(HS"G&IN"S GY) 10P8C
- 08-POLYESTER BK. 10P4C(1.2.3.6PIN)
- △09-POLYESTER BK. 10P8C(TYPE 2) W/CTK LOGO(?? 0.5u")
- △10-POLYESTER BK. 10P8C(TYPE 2) W/O LOGO
- △11-POLYESTER BLUE(HS"G&IN"S BL.) 10P8C(TYPE 2) W/CTK LOGO
- △12-HIGH TEMP. BLUE(285C). 10P8C
- △13-HOUSING HIGH TEMP YELLOW (114C). ;IN"S PBT BK 10P8C
- △14-POLYESTER BK. 10P8C(1.2.3.4.7.8.9.10PIN)

△ DETAIL "A"
SCALE 2:1
TYPE 2

△ X1		ADD NEW P/N.	Andy	101521'
△ X1		ADD NEW P/N.	Joy	081520'
△ X1		ADD NEW P/N.	Joy	071620'
△ X2		MODIFY DRAWING	SOULE	120919'
△ X2		ADD NEW P/N.	DORIS	042017'
△ X1		ADD P/N	DORIS	051816'
△ X2	N1605E01	ADD CTK LOGO OPTION	DORIS	051016'
△ X1		ADD P/N	Jacky	061015'
△ X1		MODIFY DRAWING	KARL	101514'
△ X1		NEW DESIGN	QUAN	122711'
△ X0	00699000	NEW DESIGN	QUAN	120611

MARK	ECN-NO.	REVISION RECORD	DRAWN	DATE
		UNLESS OTHERWISE SPECIFIED TOLERANCE	SCALE 2/1	CHECKED
		Dimension Range Tolerance	UNIT	APPROVED
		X.X ±0.20	mm	
		X.XX ±0.15	mm	
		X.XXX ±0.10	mm	
		ANGLE ±5°	SIZE A3	SHEET 1/1
Contact Technology Co., Ltd.		SIDE ENTRY 10P H=12.6 ROUND PIN		
Material/Plated/Notes		NAME		
SEE NOTE		PART NO. SEE NOTE		
Tooling No.		DOC. NO. NN370A008		REV. L